
JACKSONVILLE STATE UNIVERSITY™

GO! BEYOND

— GAMECOCK ORIENTATION —



JSU™
JACKSONVILLE STATE UNIVERSITY





WELCOME TO JACKSONVILLE STATE UNIVERSITY

Congratulations on your acceptance to Jacksonville State University! We are glad to have you as part of the JSU family. The next few years promise to be exciting ones for you. This guide contains information regarding orientation and registration for Fall 2022.

Orientation for first-year and transfer students is a one-day program providing useful information about the campus. You will connect with other new students as well as faculty/staff from varied backgrounds and diverse cultures.

Students attending orientation will meet with an academic advisor from the college of their intended major, who will help them register for fall classes.

Orientation is mandatory for first-year students under the age of 25 and highly recommended for transfer students.

Students who have applied and been accepted to JSU for Fall 2022 may register for Gamecock Orientation (GO!) at jsu.edu/go.

JSU GUIDE



3 WELCOME

Orientation Session Dates & Fees
JSU Student ID Number
MyJSU & Password

4 CHECKLIST

5 LET'S GET STARTED

Preparing for Gamecock Orientation
Parking Information
Technology @ GO!
Behavior Expectations
What to Bring to Orientation

6 MATH AND ENGLISH PLACEMENT

7 ACADEMICS

Academic Information
Honors Program
First-Year Student Requirements
How Do I Change My Major?

8 FAMILY AND GUESTS

A Note to JSU Families and Guests
During the Program

9 STUDENT SERVICES

Financial Aid
Tuition & Fees
Office of Housing Operations & Residence Life

10 Dining Services

Parking Decal
Mail Service

11 Medical Information RMC/JSU Health Center

Services for Students with Disabilities



12 WELCOME TO JSU

Convocation and J-Week

13 JSU READS

JSU Reads: A Common Reading Program
JSU Library

14 CAMPUS INVOLVEMENT

Campus Life
Important Dates

15 UNIVERSITY RECREATION

16 GO! STAFF

17 GO! LEADERS

18 OVERNIGHT ACCOMMODATIONS

19 DIRECTIONS TO ORIENTATION

20 GENERAL INFORMATION

21 CAMPUS MAP

23 SCHEDULE

25 MAJORS AT JSU

27 ORIENTATION REGISTRATION



START HERE



JSU STUDENT IDENTIFICATION NUMBER

Each student is assigned a JSU identification number upon acceptance to the university. This number is located at the top of your acceptance letter. You will use this number to reference your personal student information when contacting an office on campus. **It is strongly recommended that you memorize this number.**

2022 ORIENTATION SESSION DATES

- June 9
- June 13
- June 15
- June 17
- June 22
- June 24 (Transfer)
- June 28
- June 30
- July 12
- July 14
- July 19
- July 21
- July 26
- August 18 (Transfer)

ORIENTATION FEE

The nonrefundable \$80 fee must be paid in full before your reservation can be confirmed.

Students' \$80 fee includes:

Meals (continental breakfast & lunch)
Educational materials
GO! T-Shirt
Common reading program book

Family & Guests' \$20 fee includes:

Each student is limited to two family members or guests.
Meals (continental breakfast & lunch)
Educational materials
Educational sessions

MYJSU & PASSWORD

MyJSU is Jacksonville State University's portal that provides access to JSU web-based services and information. Use MyJSU for email, class registration, financial aid, paying tuition, checking grades, and more. Please go to jsu.edu/it/services/accounts/index.html for all information on how to log in to MyJSU.

☆ APPLIED TO JSU

☆ ADMITTED TO JSU

○ ...NOW WHAT???

○ APPLY FOR FINANCIAL AID.

- Complete your 2022–2023 Free Application for Federal Student Aid (FAFSA) online at **studentaid.gov**. Be sure to include JSU's school code: 001020
- You can also complete your 2022-2023 FAFSA with the app MyStudentAid on your mobile device.
- After completing the FAFSA, check your MyJSU account for additional requirements that may be needed to complete your financial aid file.
- After submitting the additional required paperwork and receiving an offer from Financial Aid (this will be sent to your student JSU email), you need to accept or decline your award online by going to your MyJSU account and selecting "Financial Aid". This is where you can view your financial aid status, eligibility, and award.
- For further questions, please contact **Financial Aid at 256-782-5006 or email finaid@jsu.edu**.

○ APPLY FOR HOUSING AND RESIDENCE LIFE OR HOUSING EXEMPTION.

- All first-year students are required to live on campus or submit an exemption form.
- The priority deadline for housing is **April 1, 2022**. Visit **jsu.edu/housing** for additional information on the layout of residence halls, pricing, exemptions, and the online application.
- Students who have a unique situation and are not able to live in on-campus housing may submit an exemption request online for review by the Exemption Board at **jsu.edu/housing**.

○ SELECT A MEAL PLAN.

- Students living on campus are required to have a meal plan.
- There are commuter meal plans available for students living off campus.
- Visit the Sodexo Dining Services website at **dining.jsu.edu** to select a meal plan.

**See full meal plan options on page 10.*

○ FAMILIARIZE YOURSELF WITH REQUIREMENTS FOR YOUR MAJOR.

- Go to **jsu.edu**.
- Click on "Academics."
- Click on "Degree Listing" and find the degree that you are seeking.
- Click on "View Course Catalogue Entry."
- Familiarize yourself with the JSU Catalogue before orientation.

**All majors offered are listed on page 25.*

○ REGISTER AND ATTEND GAMECOCK ORIENTATION.

- Visit **jsu.edu/go** and click "Register for Orientation"
- Log back into your orientation reservation system to access your task list before and after your orientation session.

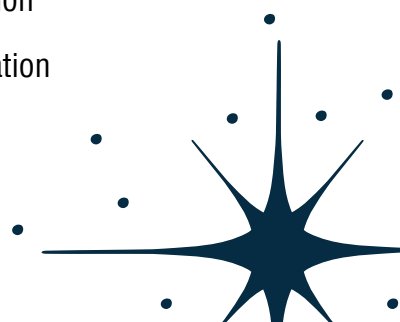
○ FOLLOW GO! ON SOCIAL MEDIA.



/JSUGamecockOrientation



@JSUGamecockOrientation



GAMECOCK ORIENTATION



PREPARING FOR GAMECOCK ORIENTATION

When you arrive at Gamecock Orientation, please allow enough time for parking and check-in so that you can begin the program at 8:30 AM. Morning check-in begins at 8:15 AM in Leone Cole Auditorium.

PARKING INFORMATION

There is a map in the center of this booklet that will help you find recommended parking. You can also follow the signs when entering campus. ***Please do NOT park in restricted spaces and/or spaces for people with disabilities unless you have an accessible parking pass or tag.** Accessible parking is available near Leone Cole Auditorium. Follow the map included in this guide. If you are using a GPS, our location is **700 Pelham Road North, Jacksonville, AL 36265.**

TECHNOLOGY @ GO!

- Make sure to follow our social media accounts to stay up to date with information.
- Students will be registering online in computer labs during orientation.
- When you arrive on campus, take advantage of our GO! Snapchat filter.
- Make sure to check your JSU email for important information. It is important to know your username and the password for your email and MyJSU before attending orientation.
- Contact Technology Support if you cannot log into your email account. Bringing your own laptop is not necessary.

BEHAVIOR EXPECTATIONS

The JSU Student Code of Conduct applies throughout orientation. To view the Code of Conduct, visit jsu.edu/studentaffairs and select the "Student Handbook" section on the left-hand side of the page.

WHEN YOU ATTEND GAMECOCK ORIENTATION, BRING THE FOLLOWING:

- GO! confirmation email received when you pay and complete your registration. This will be sent to your JSU email address.
- Your parking pass will be included in your confirmation email. Please place it on the dashboard before leaving your car.
- MyJSU username and password, received in your JSU acceptance letter.
- Transcripts for all college work previously completed, CLEP, or AP/IB credit.
- Comfortable clothes and walking shoes. You will be walking frequently around campus for different meetings.
- A light jacket. Weather during summer is very hot and humid, but conference rooms can be chilly.
- Umbrella and raincoat. Alabama weather is unpredictable in the summer; be prepared.
- Transportation around campus is not provided for students, family members, or guests.
- For any accommodations, please contact Disability Resources at 256-782-8380.





JSU EDREADY MATH & ENGLISH PLACEMENT EXAMS

JSU wants to save you time and money by offering the **NO-COST, INDIVIDUALIZED** JSU EdReady Math Placement and English Placement!

Who Takes JSU EdReady?

All first-year students and transfer students who have not completed their first required math and/or English course are required to take EdReady.

When Should I Complete JSU EdReady Math & English Placement?

You may access your EdReady placement exams as soon as you receive your acceptance letter to JSU. The deadline to complete both EdReady exams is two weeks before your scheduled orientation date.

HOW TO TAKE JSU EDREADY MATH & ENGLISH PLACEMENT EXAMS

- 1 Take at home before your Gamecock Orientation session.
- 2 Disable pop-up blockers (Chrome and Firefox are recommended browsers).
- 3 Log-in to your MyJSU Account (Received in JSU acceptance letter).
- 4 Click on "Placement Exams."
- 5 If the pop-up appears, click "Get Started" (You do not enter a key).
- 6 Choose the exam you would like to take first (JSU Math Placement or JSU English Placement).
- 7 Click "Add to Goals."
- 8 Next, click "Go to Goal."
- 9 Click "Start Assessment."
- 10 Take this assessment and submit your results. You will immediately be given a score and a study path.
- 11 If you do not make the required minimum placement score, you should work on your study path to achieve the required score.
- 12 Repeat steps 3-11 to complete the second EdReady (math or English).
- 13 Students are highly encouraged to work both math and English study paths to a score of 100.

EDREADY ENGLISH PLACEMENT

All new students take English EdReady and work their study paths to a score of 90 for college preparation. Students without ACT/SAT scores may use their English EdReady initial score for placement.

First-Year Writing Course	ACT/SAT English Subtest Score	English EdReady Initial Score
EH 105/EH 115	17 and below ACT 420 and below SAT	55 and below
EH 101	18 and above ACT 430 and above SAT	56 and above
EH 103	25 and above ACT 610 and above SAT	71 and above

After working the English EdReady study path to a score of 90, students who place into EH 105 and wish to move to EH 101, or students who place into EH 101 and wish to move to EH 103, may take an additional self-assessment to be considered. Please follow the directions on your English EdReady study path completion page to learn more.

Visit the First-Year Writing website for more information: jsu.edu/english/first-year-writing.html

ACADEMIC INFORMATION

A student who is conditionally admitted must meet certain requirements. A student conditionally admitted must be continuously enrolled in prescribed developmental skills courses, participate in prescribed counseling and advisement activities, and remediate all academic skill deficiencies (including SSC 104) within one year. Please visit the following link for more information on admission requirements: jsu.edu/admissions.

HONORS PROGRAM

First-year students with a 25 or higher composite score on the ACT (or SAT equivalent) and a B average in high school are invited to apply for the Honors Program. Entering freshmen with no standardized test score may be provisionally admitted with an initial English Ed Ready score of 71 or above. Some of the benefits of being a member of the Honors Program include: smaller class size, priority registration, service learning and community service opportunities, domestic and international study opportunities, and enhancement of graduate school and employment opportunities.

In order to graduate with honors and be recognized at graduation, a student must successfully complete 24 hours of Honors courses. Students must be a member of the Honors Program to enroll in Honors courses. There are special instructions for registering for classes the first semester in the program, so students should inform their advisor that they are members of the Honors Program. The online application can be found at jsu.edu/honors-program. For additional information, contact the Honors Program at **256-782-5696** or honors@jsu.edu.

FIRST-YEAR STUDENT COURSE REQUIREMENTS

SSC 101

All students with fewer than 24 earned hours must take SSC 101 (First-Year Experience): First-time freshmen over the age of 24 are exempt. Students will achieve course objectives related to their overall adjustment to being a successful student at JSU. Topics discussed include: how to declare a major and develop a relationship with an academic advisor, understand components of MyJSU, know and understand JSU policies, participate in the common reading program, learn and become active in JSU activities for students, understand and develop appropriate behavior for a college student, become familiar with student services, and acquire knowledge and skills necessary to prosper as a JSU student.

SSC 104

Conditionally admitted students must take SSC 104 (Academic Success Skills): This course will be completed during the first year of enrollment and is an individualized freshman seminar providing supportive guidance in study skills.



HOW DO I CHANGE MY MAJOR?



Scan this QR code to update or change your major prior to attending Gamecock Orientation. After you register for classes, you must contact the department of your major in order to change your major. For example, if your major is criminal justice and you want to change it to art, contact the Art Department.

BEYOND TO STUDENT SERVICE

A NOTE TO JSU FAMILIES AND GUESTS

Parents and family members are important resources for our new students. We have designed special sessions for parents and guests that will take place throughout the orientation day. This event is designed for new students' parents to gain valuable information concerning services offered to students on campus. Parents will also be able to talk with representatives from the different offices on campus. Parents/guests will attend some sessions with their students, including lunch. There is a family and guest fee

of \$20 per person. This non-refundable fee includes meals (continental breakfast & lunch), educational materials, and educational sessions. **Each student is limited to two family members or guests.** Walking is a central component of the GO! experience. Parents are advised to wear comfortable clothing and shoes due to warm temperatures and movement among buildings on campus. This is a full-day program. Please plan to spend the entire day on campus to receive the full benefit of this program.

DURING THE PROGRAM YOU WILL:

- Meet other Jacksonville State University parents.
- Tour JSU's campus.
- Meet with your student's Gamecock Orientation Leaders who can answer your questions and concerns about your student's adjustment to life at JSU.
- Meet and talk with representatives from Financial Aid, RMC Student Health Center, Campus Safety, Residence Life, and many other offices.
- Participate in sessions designed for parents on how to assist your student with their transition to JSU.



FINANCIAL AID

Students may use their scheduled financial aid (assistance that has been processed, awarded, and accepted), with the exception of federal work study, to confirm class registration. Financial aid status and awards may be verified on MyJSU. **Financial aid awards and scholarships do not cover the orientation fee.**

See our student checklist below:

- ☐ Have you applied for financial aid at **studentaid.gov** or MyStudentAid app?
- ☐ Have you completed your financial aid file by reviewing your requirements on your MyJSU account?
- ☐ Have you received and accepted your aid package?
- ☐ If you have accepted a student loan, have you completed the Master Promissory Note, loan entrance counseling, and Annual Student Loan Acknowledgment at **studentaid.gov**?
- ☐ Have you reviewed your account balance?
- ☐ Do you know the payment due dates and deadlines?
- ☐ Questions? Contact JSU at 256-782-5006.
- ☐ Check your JSU email account.

Other Resources: studentaid.gov, jsu.edu/finaid.

Remember that you must renew your FAFSA each year at fafsa.gov!

OFFICE OF HOUSING OPERATIONS & RESIDENCE LIFE

First-year undergraduate students are required to live on campus or submit an exemption form. If you are a student from Calhoun, Cherokee, Cleburne, Etowah, St. Clair, or Talladega county and do not wish to live on campus, we ask that you submit an exemption request online. Students may complete an application or exemption online at **jsu.edu/housing/applynow/index.html**. Students interested in the living-learning communities, including SPARK (Student Program for Academic Resources and Knowledge) or FirstUp (a first-generation living-learning community, please visit **jsu.edu/housing/living-learning.html** for more information. First-year undergraduate students will

TUITION AND FEES

Undergrad (1-11 hours)

In-State	\$333/hour
Out-of-State	\$665/hour

Undergrad (12-18 hours)

In-State	\$4995
Out-of-State	\$9975

Undergrad (19+ hours)

In-State	Block Rate + \$333/hour
Out-of-State	Block Rate + \$665/hour

JSU Estimated Cost Calculator:

webprod.jsu.edu/costcalculator/

JSU Block Rate Webpage:

jsu.edu/blockrate/index.html

Fees:	1-3 hours	\$150/hour
	4-5 hours	\$125/hour
	6+ hours	\$700 flat fee /semester

Residence Halls: Room rates vary\$1900-\$3150

Summary of Expenses (Estimated):

Tuition (15 hours - in state)	\$4995
Housing (Freshmen)*	\$1900
Meal Plans	\$1870
Books/Supplies	\$900
Miscellaneous	\$500
Fees (12 hours)	\$700

Total: \$10,865

Tuition and fees are subject to change

self-select their assignments based on their application submission date. Details about specific selection dates can be found online at **jsu.edu/housing/applynow/index.html**. Applications cannot be processed without the \$200 nonrefundable application fee. Students who submit their application after April 1, 2022 or do not select their room during their assigned dates will be assigned by the housing office based on preferences and availability. All assignment information will be sent to the JSU email address.

STUDENT SERVICES

DINING SERVICES

Sodexo Dining Services manages dining on campus. They provide a variety of flexible meal plans available for both resident and commuter students. If you live on campus in Crow, Curtis, Daugette, Dixon, Fitzpatrick, Logan, Meehan, Patterson, or Sparkman Hall, your JSU account will automatically be billed for the plan, and you will need to choose from the options listed to the right. **If you do not choose a plan, you will be placed on the default plan of ten meals per week with \$400 flex.** For more details on how the meal plan works, please visit the Sodexo website: dining.jsu.edu.

Meals

Meals can be used at either the Gamecock Diner or the Jack Hopper Dining Hall. Students will access their meals using their JSU Student ID, and they will be charged one meal when they enter either the Gamecock Diner or the Jack Hopper Dining Hall.

Flex

Flex can be used at any of the food locations listed on campus. Students will access their flex “dollars” using their JSU student ID. Students will swipe their ID, and the amount they purchase will be deducted from their current total amount of flex dollars.

PLACES TO EAT

For more information, visit: dining.jsu.edu.

- Jack Hopper Dining Hall
- WOW! Cafe and Wingery
- Chick-Fil-A
- Mein Bowl
- Peak Café
- Freshens
- Gamecock Diner
- Jazzman's Cafe & Bakery
- Red Rooster
(Flex accepted)

MEAL PLAN OPTIONS

All Options \$1870

(based on last year's rate, subject to change)

- Plan A: Unlimited meals with \$50 Flex
- Plan B: 14 meals/week with \$125 Flex
- Plan C: 10 meals/week with \$400 Flex (default plan)
- Block 80: 80 meals/semester with \$800 Flex

Commuter Options

- Block 50: 50 meals/semester with \$100 Flex **\$594**
- Commuter plan with \$100 Flex **\$110**
- Commuter plan with \$200 Flex **\$220**
- Commuter plan with \$300 Flex **\$330**
- Commuter plan with \$400 Flex **\$440**

PARKING DECAL

Parking decals are required for all vehicles parked on campus. You register for parking decals online at my.jsu.edu under the “Student” tab. The \$50 decal fee* can be charged to a credit card added to the student’s account. After online registration, a decal will be mailed to the registered address, unless you choose the J-tag payment option, which will require decal pickup at UPD to confirm payment method.

**Decal fees are subject to change.*

MAIL SERVICE

The campus mail center is located on the 4th floor of the Theron Montgomery Building with window service offered. Any regular postal assistance or service may be provided. For more information, you may contact the Mail Center directly at **256-782-5290**.



STUDENT SERVICES

MEDICAL INFORMATION RMC/JSU HEALTH CENTER

MEDICAL INFORMATION AND IMMUNIZATIONS

The RMC/JSU Health Center is a primary health care facility providing outpatient medical services and urgent and primary care, as well as promoting preventative health measures to currently enrolled students, staff, and faculty. Prior to enrollment, all new students are required to submit completed student health information to Med+Proctor.

Please visit jsu.edu/studenthealth/forms.html to complete required student health forms and submit forms to Med+Proctor. If you have any questions, contact the RMC/JSU Health Center at:

RMC /JSU Health Center
1701 Pelham Road South
Jacksonville, Alabama 36265-1602
P.256-782-5310 F.256-782-5307

WALK-INS
8 AM – 11 AM
APPOINTMENTS
1 PM – 3:30 PM

Clinic hours are Monday – Thursday 8:00 AM – 4:30 PM
and Friday 8:00 AM – 2:30 PM, closed daily 12:00 PM – 1:00 PM for lunch.

BE THE FRIEND ONLINE PREVENTION MODULE

All incoming students are required to complete the Be THE Friend online prevention module within their first semester at JSU. After completing the module, students will understand:

- the dynamics of dating and domestic violence, sexual assault, and stalking
- resources and processes for how to get help for themselves and their friends
- their barriers to intervention
- how to safely intervene in dating and violence, sexual assault, and stalking
- how to live up to their and the university's values as a change maker on campus
- how to build a culture of respect and eliminate domestic and dating violence, sexual assault, and stalking

DISABILITY RESOURCES

Disability Resources interacts and collaborates with students, faculty, and staff to promote an inclusive environment at Jacksonville State University by educating the campus community and facilitating appropriate accommodations for students with disabilities. Students with documented disabilities such as mobility, chronic medical conditions, hearing or visual impairments, or learning and/or psychological disorders may be eligible for services and should submit an accommodation request form and documentation of their disability to Disability Resources to begin the process.

Representatives from Disability Resources are available to meet with students and family members during Gamecock Orientation or any campus visit. If you require special accommodations, please contact Disability Resources at **256-782-8380**.



You can find the module and complete it in your own time even before you come to campus on our website:

jsu.edu/bethefriend

J-WEEK EVENTS

CONVOCATION AND J-WEEK

What Is Freshman Convocation?

Freshman Convocation is a unique celebration held each fall to honor the incoming freshman class. Convocation is designed as an opportunity to reflect on the significance of your educational endeavor and the commitment of the university to support you in the pursuit of your goals. Convocation for the Fall 2022 freshman class will be held on Tuesday, August 23rd at 6:00 PM. We will give away prizes such as book scholarships, T-shirts, and other JSU gear. This will be a great time to reconnect with your GO! Leader and other friends from orientation.

J-Week at a Glance

A new school year offers new opportunities to make friends and get involved. J-Week is designed to start your year off right by getting you immersed in the culture of the town and university with events like Spirit on Mountain Street and getting you connected to other students and organizations with our annual Get on Board Day event. J-Week will be hosted the week of August 22 – August 26, 2022.



OLIVIA FIELDS: "Rejection is just redirection! Getting a "no" from a friend, organization, or job you applied to seems like the end of the world at the time, but it pushes you toward better. Take that rejection and turn it into something awesome, 9 times out of 10 you will look back and be glad you got that "no."



GO! TIPS

MADI WISNER: "Learn how to effectively manage your time! College isn't as hard as it's rumored to be, but it can be very overwhelming if you don't have anything planned out. Invest in a planner and put effort into making a schedule for yourself! "

CARLEE FLEMING: "Take advantage of everything our campus has to offer! Go study at the library, grab coffee with friends at the Peak, eat some really good food at the TMB! JSU has so many spots to hang out with friends, do homework and unwind on campus! Utilize the places that this great university has to offer! "

BELA VENEGAS: "Be yourself and don't be afraid to ask for help!"

A COMMON READING PROGRAM

Callings: The Purpose and Passion of Work from the StoryCorps Project

"These are the voices of men and women of varied age, geographies, and backgrounds, driven by a fire from within to find meaning in their work."

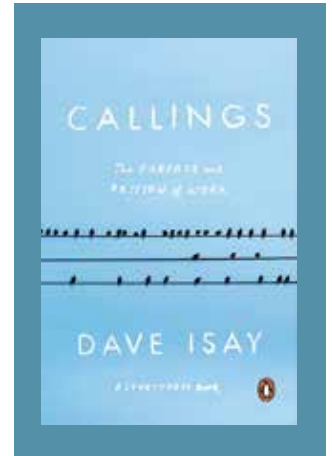
- Dave Isay, Founder of StoryCorp

StoryCorps began in 2003 with one StoryBooth in New York's Grand Central Station, a small place for everyday people to collect and preserve stories through interviews with family and friends. From that one StoryBooth, StoryCorps has grown into a national organization whose mission is "to preserve and share humanity's stories in order to build connections between people and create a more just and compassionate world." Dave Isay, StoryCorp's founder, has compiled this volume in the StoryCorps series, focusing on the unique individual stories of people and their pursuit of fulfillment in their professional lives – we hear how they came to their chosen vocations and what their work has meant to them. These stories – from Ford assembly plant supervisor to NBA referee – provide insight into how our lives can be shaped by the work we do.

As first-year students, we've all wondered about choosing a major and career path, and in *Callings: The Purpose and*

Passion of Work, Isay hopes to motivate readers to find their own calling by sharing the stories of people who have followed their inspiration into careers that are equally challenging and inspirational.

Firemen, teachers, artists, actors, farmers, doctors, bricklayers, and business owners: All were drawn to their professions by a desire to create a life for themselves, their families, and their communities. By telling their stories, Isay demonstrates that work can be about more than the job; it can be about the impact peoples' dreams and ambitions can have on their lives in a greater and more meaningful way.



Students will study and discuss the Common Reading Program book in English Composition and First-Year Student Experience courses. The goals of JSU Reads: A Common Reading Program are to unite first-year students and to promote thought and action on a variety of relevant issues by reading a common text during the first semester of college.

JSU LIBRARY

Houston Cole Library

The twelve-story facility is home to over 1.5 million books, over 150 databases for journal and newspaper articles, and thousands of e-books divided into six subject specific floors with a subject specialist librarian on each of these floors. It also houses several unique areas, including the Student Success Center, Children's Corner, Whitesel Multimedia Lab, and the Alabama Gallery (special collections). There's also plenty of study space available, including the third-floor Quiet Floor, as well as a student computer lab and group-study rooms. Whether you need research help, a quiet place

to study, or just a quick coffee between classes, let the Houston Cole Library become a central resource for your college career. For more information, visit jsu.edu/library.

Library Highlights

- Six subject-specific floors w/subject specialists to provide research help
- Student Success Center
- Jazzman's Café & Bakery (Lobby)
- Whitesel Multimedia Lab (6th Floor)
- Group-study rooms (3rd/4th Floors)
- Open student computer lab (10th Floor)
- Students may check out laptops, iPads, and webcams in the multimedia lab

CAMPUS INVOLVEMENT

CAMPUS LIFE

Dean of Students Office

The Dean of Students Office staff is available for an array of opportunities for student involvement. JSU recognizes over 100 organizations for students to enhance their college experience outside of the classroom. The Dean of Students Office staff are available to assist you in finding what organization is right for you. Some of the organizations offered to you include:

Student Government Association

- All students enrolled at JSU are members.
- Serves as the voice for students on campus.
- Houses the Student Senate, Student Activities Council, and Organizational Council.
- Sponsors student events throughout the school year.

Questions? Contact Cody Beck, Assistant Dean of Students, at cbeck@jsu.edu or **256-782-5493** for more information!

Fraternity and Sorority Life

- Home to eighteen nationally recognized, diverse fraternities and sororities (comprised of the Interfraternity Council, the National Pan-Hellenic Council, and the Panhellenic Council).
- Develop leadership and career skills while creating life-long friendships.
- Participate in various philanthropic and community service opportunities.
- Join the largest community of students on campus, with 750+ members.

BRIA CLENDENNING: "Take every opportunity to make friends. You can meet friends by joining study groups, attending campus events, and by being yourself. There will be people who share similar interests and goals. Step out of your comfort zone, and let your personality shine through! "

IMPORTANT DATES

Academic Schedule

Fall 2022

Aug. 17 – 21	Panhellenic Sorority Recruitment
Aug. 19 – 20	Move In
Aug. 22 – 26	J-Week
Aug. 21 – 27	IFC Fraternity Recruitment
Aug. 23	Freshman Convocation
Aug. 23	Get on Board Day
Aug. 24	Classes Begin
Aug. 24	Rec Fest
Aug. 25	Spirit on Mountain Street
Aug. 26	SGA & UREC Splash Bash
Sept. 4	NPHC Expo
Sept. 5	Labor Day
Oct. 1	Family Day
Nov. 21 – 25	Thanksgiving Holiday
Dec. 7 – 13	Final Exams

Spring 2023

Jan. 9	Classes Begin
Jan. 16	MLK Day
March 21 – March 25	Spring Break
April 22 – April 28	Final Exams

SAVANNAH HAMM:

"Be yourself! College is a place where you can express yourself freely and discover where you belong in this world. Getting involved will help you find your place. Be kind and get connected! You may never know how far a smile will go."



TANNER HURST: "College is fun and full of opportunities, but often times it is stressful, time consuming, and difficult. I have discovered through my time here that in order to stay positive and motivated you have to take time to do things that you enjoy."

UNIVERSITY RECREATION

The 101,000-sq.-ft. Recreation and Fitness Center (RFC) opened in January 2019 and provides recreation and leisure opportunities for JSU students.

Visit us at jsu.edu/urec. ENGAGE WELLNESS and keep #movingcocky!

Facility Hours:

Monday – Thursday

5 AM — 10 PM

Friday

5 AM — 8 PM

Saturday

9 AM — 8 PM

Sunday

12 PM — 8 PM

*All hours subject to change.

Rec Center Highlights

- Three-court gym (wood courts for basketball, volleyball, badminton, and more)
- One multi activity court with buffer walls for indoor soccer, basketball, and volleyball
- Three-lane indoor track
- Cardio machines, free weights, machine weights, and functional training areas
- Three fitness studios
- The Peak Café – Starbucks coffee and snacks
- Indoor pool with lap lanes, a vortex, and hot tub
- Outdoor social pool with outdoor patio area
- Gaming lounge



Other Recreational Opportunities

- Free group fitness classes featuring Spin, Pound, TRX, and more
- Adventure Recreation Center with outdoor equipment rentals
- Adventure Recreation trips
- Intramural sports including flag football, basketball, soccer, and more
- Personal training, massage therapy, swim lessons, and other services
- Part-time employment opportunities
- Lifeguard and CPR Certifications
- Premium fitness classes including Yoga and F45 Training

GO! STAFF

GO! STAFF



Keaton Glass
DIRECTOR
First and Second
Year Experience



Eric McCulley
**ADMINISTRATIVE
ASSISTANT**
First and Second
Year Experience



Abbie Beatty
**COORDINATOR,
PEER MENTORING**
First and Second
Year Experience

GO! LEADER OVERVIEW

GO! Leaders are students who volunteer their time to welcome and assist new students and their families. Members of the GO! Program can be identified by their distinctive red polos and welcoming smiles. These students are trained to help make orientation a memorable and fun experience. Have a question or problem? Seek out a GO! staff member — they're here for you!

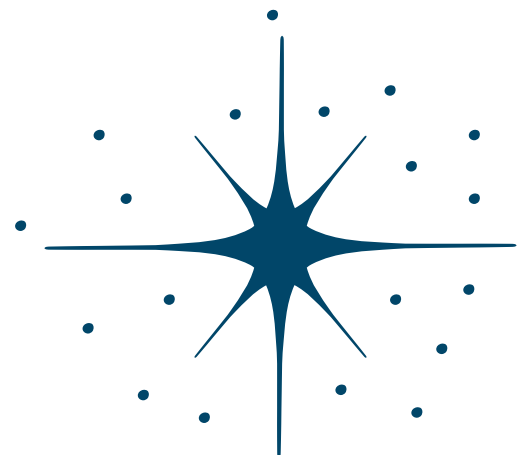
GO! COORDINATOR



Sarah Sumners
Marietta, GA
Communications



SARAH SUMNERS: "Stay in touch with your GO! Leader! Utilize their line of communication after orientation to ask questions when you need them. We've all been first-year students before, so we know what it's like to not have the answers! "



GAMECOCK ORIENTATION

GO! LEADERS



GROUP 1



Bria Clendenning
Reedsburg, WI
Political Science



Olivia Fields
Newnan, GA
Business Management

GROUP 2



Savannah Ham
Jacksonville, AL
Accounting



Tanner Hurst
Ashland, AL
Nursing

GROUP 3



Madi Wisner
Odenville, AL
Special Education



Dylan Gibson
Ranburne, AL
Economics

GROUP 4



Carlee Fleming
Albertville, AL
Nursing



Luke Reed
Sylacauga, AL
Biology

GROUP 5



Mandy Olivier
Dallas, GA
Dietetics



Bela Venegas
Oxford, AL
Secondary Education

GROUP 6



Trey Caldwell
Springville, AL
Marketing



Ijha Sims
Birmingham, AL
Forensic Investigation





OVERNIGHT ACCOMMODATIONS

Hotel Finial

1600 Quintard Ave.
Anniston, AL 36202
256-236-0503

University Inn

1530 South Pelham Rd.
Jacksonville, AL 36265
256-435-3300

Hampton Inn

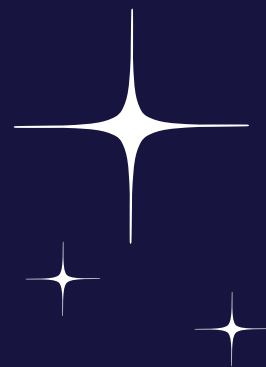
1041 JD & L Dr. SW
Jacksonville, AL 36265
256-782-0330

Hilton Garden Inn

280 Colonial Dr.
Oxford, AL 36203
256-831-0083

Courtyard by Marriot

289 Colonial Dr.
Oxford, AL 36203
256-831-7955



DIRECTIONS TO ORIENTATION

FROM HUNTSVILLE, ALABAMA:

Take US-Hwy 431 (Governor's Drive) South through Gadsden. Once south of Gadsden, turn left onto Alabama Hwy 204. Hwy 204 leads directly to campus. Please consult the campus map for your desired location.

FROM ROME, GEORGIA:

Travel on Hwy 27 South to Cedartown, and take US-Hwy 278 West to Piedmont, Alabama. In Piedmont, turn left on Hwy 200. Hwy 200 merges onto Alabama Hwy 21 South. Follow Hwy 21 South to Jacksonville. You will see the 12-story Houston Cole Library on the left and the marble university sign on the right. The entrance to the university is on your right. Please consult the campus map for your desired location.

FROM BIRMINGHAM, ALABAMA:

Take I-20 East to Exit 185 (Anniston/Oxford-Alabama Hwy 21). Turn left onto Alabama Hwy 21 North. Go through Oxford, Anniston/McClellan, and the Jacksonville Square (about 20 miles). You will see the 12-story Houston Cole Library on the right and the marble university sign on the left. The entrance to the university is on your left. Please consult the campus map for your desired location.

FROM ATLANTA, GEORGIA:

Take I-20 West to Exit 185 (Anniston/Oxford-Alabama Hwy 21). Merge right onto Alabama Hwy 21 North. Go through Oxford, Anniston/McClellan, and the Jacksonville Square (about 20 miles). You will see the 12-story Houston Cole Library on the right and the marble university sign on the left. The entrance to the university is on your left. Please consult the campus map for your desired location.

FROM MONTGOMERY, ALABAMA:

Take US-Hwy 231 North. In Sylacauga, take Alabama Hwy 21 North off of US-Hwy 231. Go through Talladega, Oxford, Anniston/McClellan, and the Jacksonville Square (about 37 miles). You will see the 12-story Houston Cole Library on the right and the marble university sign on the left. The entrance to the university is on your left. Please consult the campus map for your desired location.

EXTRA INFORMATION

STAY COCKY WITH A BOOK & A TEE!

Pick up your orientation
T-shirt and Common
Reading book at
Gamecock Orientation!



HELPFUL NUMBERS

The area code for all numbers below is **(256)**, or call us
toll free by dialing **800-231-5291**, or visit us on the Web at
www.jsu.edu.

Orientation Information **782-5042**

www.jsu.edu/go

Admissions **782-5268**

www.jsu.edu/admissions

Student Accounts (payment of fees) **782-5458**

www.jsu.edu/bursar

Career Services **782-5482**

www.jsu.edu/careerservices

Counseling Services **782-5475**

www.jsu.edu/ccservices

Disability Resources **782-8380**

www.jsu.edu/dss

Financial Aid **782-5006**

www.jsu.edu/finaid

RMC/University Health Center **782-5310**

www.jsu.edu/studenthealth

Registrar **782-5400**

www.jsu.edu/registrar

Sodexo Dining Services **782-7242**

dining.jsu.edu

Dean of Students Office **782-5491**

www.jsu.edu/studentlife

Tutoring **782-8225**

www.jsu.edu/student-success/support/tutoring

Telephone Center **782-8001**

www.jsu.edu/dit/tc

Housing Operations & Residence Life **782-5122**

www.jsu.edu/housing

University Police **782-8888**

www.jsu.edu/police

Veteran Services **782-8838**

www.jsu.edu/veterans

Student Success Programs & Services **782-5020**

www.jsu.edu/studentsuccess

Academic Advising **782-8463**

www.jsu.edu/studentsuccess/advising/index.html

Testing Services (ACT) **782-5475**

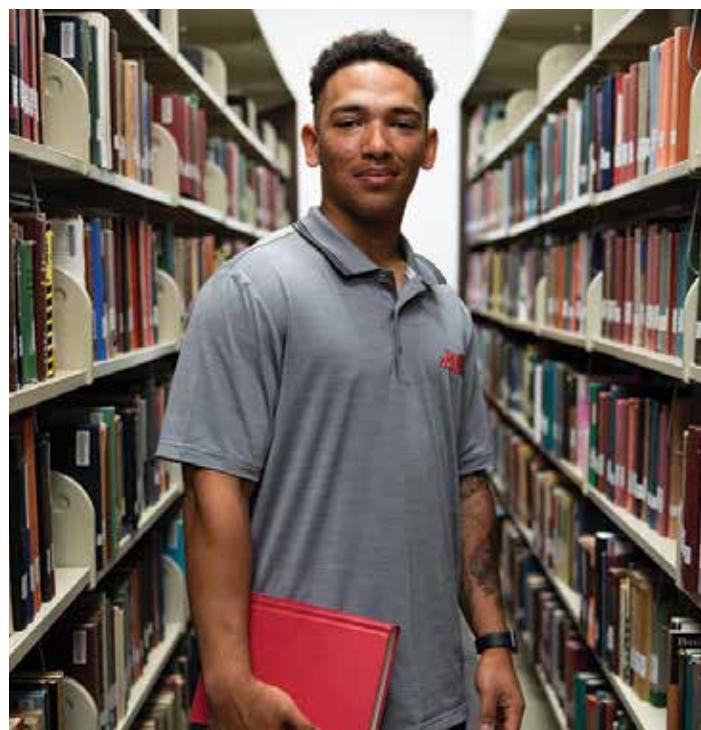
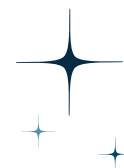
www.jsu.edu/studentsuccess/testing/index.html

Learning Services **782-5570**

www.jsu.edu/learningservices

Math & English Placement **782-5783**

www.jsu.edu/learningservices/placement/index.html



CAMPUS MAP

CAMPUS MAP LEGEND

- | | | | |
|--|-----------------------------|----------------------------|---|
| 02. Amphitheater | 46. Daugette Hall | 38. Leone Cole Auditorium | 40. Quad |
| 41. Anders Hall (Round House) | 57. Dillon Field | 14. Logan Hall | 30. Ramona Wood Building |
| 31. Angle Hall | 19. Dixon Hall | 62. Longleaf Studios | 54. Recreation & Fitness Center |
| 51. Athletic Fieldhouse | 22. Duncan Maintenance | 16. Martin Hall | 12. Rock House |
| 25. Ayers Hall | 45. Fitzpatrick Hall | 17. McGee Science Center | 09. Rowe Hall |
| 10. Baseball Field | 52. Gamecock Field | 28. Mason Hall | 47. Salls Hall (University Police) |
| 36. Bennett Field | 42. Hammond Hall | 58. Meehan Hall | 63. School of Business & Industry Complex |
| 06. Brewer Hall | 01. Honors House | 04. Merrill Building | 18. Self Hall |
| 56. Campus Inn Apts | 27. Houston Cole Library | 60. Mountain Street Homes | 11. Soccer Field |
| 23. Carlisle Fine Arts Facility | 15. International House | 37. Pannell Hall | 08. Softball Field |
| 59. Colonial Arms Apts | 33. Intramural Field/Track | 13. Patterson Hall | 24. Sparkman Hall |
| 07. Conferences and Support Operations | 39. Jack Hopper Dining Hall | 35. Paul Carpenter Village | 50. Stephenson Hall |
| 29. Counseling Services | 55. Jax Apts | 32. Penn House Apts | 03. Stone Center |
| 20. Crow Hall | 64. JSU-RMC | 21. Pete Mathews Coliseum | 34. Tennis Courts |
| 48. Curtiss Hall | 49. JSU Stadium | 05. The Pointe@JSU | 43. Theron Montgomery Bldg |
| | 53. Kenamer Hall | 26. President's Home | 44. TMB Lawn |
| | | | 61. University Development |



GO!
TIPS

LUKE REED:

"Be intentional in getting out of your comfort zone. As a freshman, open yourself to new experiences and welcome new ideas and perspectives to your lifestyle. Growth is a huge part of your college experience and we can not grow if we are not willing to be open. "

DYLAN GIBSON:

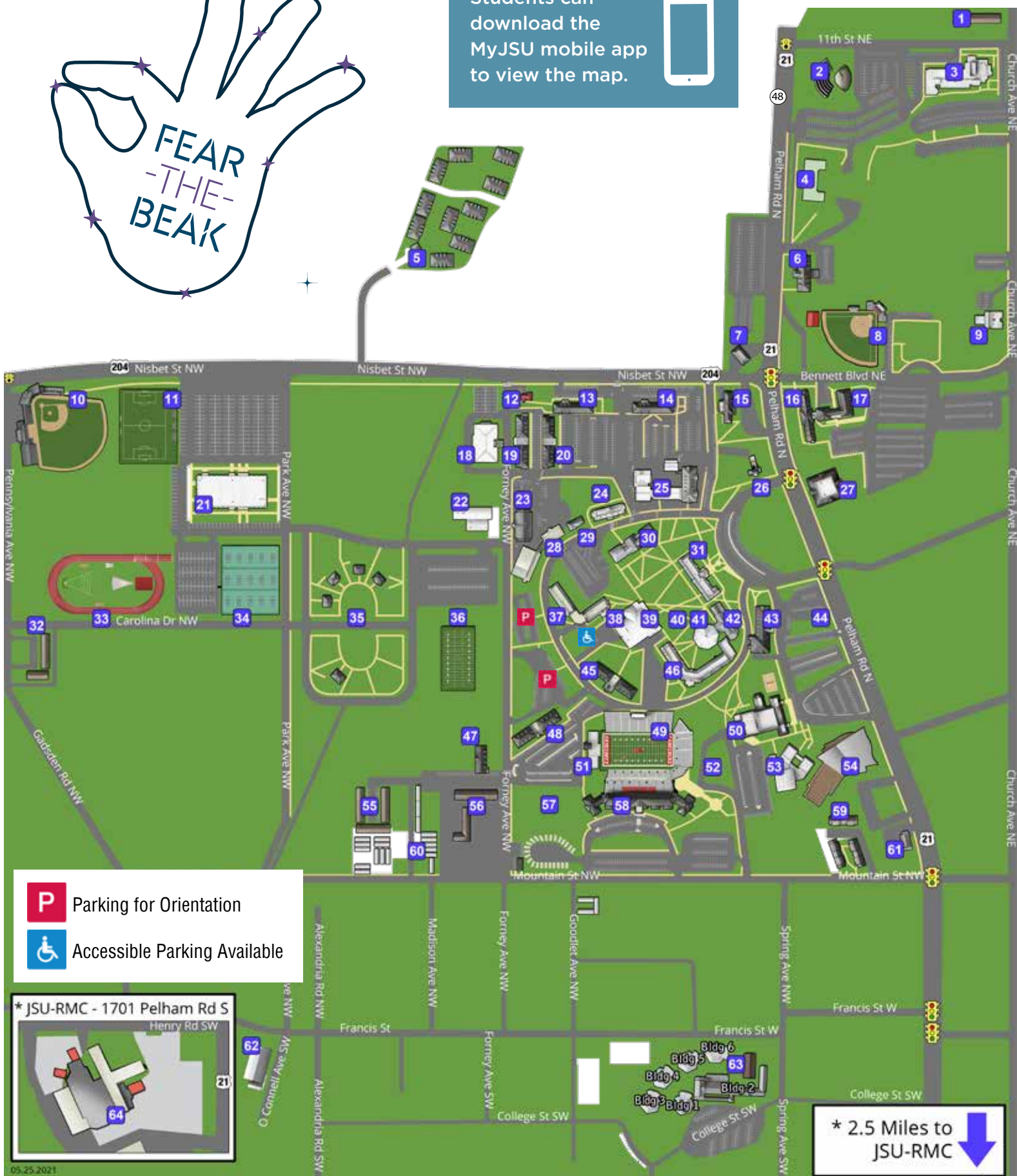
"Take 30 minutes to breathe every day, even if you have to schedule it in."

MANDY OLIVIER:

"Get involved in whatever you find interest in. This is a great way to not only grow as a person, but to gain love for this university and those that go here as well. It can be scary to jump in and join things, but it is more than worth it in the end! "



Students can download the MyJSU mobile app to view the map.

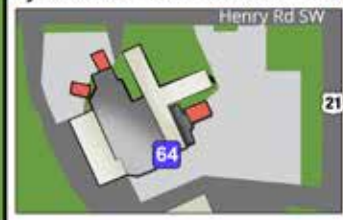


Parking for Orientation



Accessible Parking Available

* JSU-RMC - 1701 Pelham Rd S



* 2.5 Miles to JSU-RMC



GUIDE FOR THE DAY

STUDENT & GUEST SCHEDULE

8:15 AM

Check-In

(Students and Guests) Leone Cole Auditorium

The party starts here! Students will check in with their GO! Leaders outside of Leone Cole Auditorium. Here students and guests will receive name badges, which also act as a meal pass for lunch later in the day.

8:30 AM

Opening Session

(Students and Guests) Leone Cole Auditorium

The JSU experience begins with an hour of entertaining skits. Students will learn about JSU student services during this high-energy production. This session will set the tone for the remainder of the day when students will learn more about JSU.

9:45 AM

Student Services Overview

(Students) Ayers Hall

Students will meet with their GO! group and hear from their GO! Leaders as they discuss all of the services available on campus.

(Guests) Leone Cole Auditorium

A representative from the Student Success Center will be present to discuss services available on campus to help your students be successful.

10:45 AM

MyJSU and Registration Overview

(Students) Ayers Hall

GO! Leaders will go over MyJSU, campus email, and online registration information. Students will be able to ask questions about student service information, academic success, and campus life.

Director Q&A

(Guests) Leone Cole Auditorium

Guests will have the opportunity to ask questions about student services to directors from various departments on campus.

11:15 AM

Lunch (Groups 1-3)

(Students and Guests) Jack Hopper Dining Hall

Students and Guests will enjoy all-you-can-eat dining at Jack Hopper Dining Hall. Name badges must be shown to be admitted.

Tour (Groups 4-6)

(Students and Guests) Quad

GO! Leaders will show students and guests around campus. They will highlight commonly visited areas and student service locations.

12:00 PM

Tour (Groups 1-3)

(Students and Guests) Quad

GO! Leaders will show students and guests around campus. They will highlight commonly visited areas and student service locations.

Lunch (Groups 4-6)

(Students and Guests) Jack Hopper Dining Hall

Students and Guests will enjoy all-you-can-eat dining at Jack Hopper Dining Hall. Name badges must be shown to be admitted.

12:45 PM

(Students and Guests) Meet in Leone Cole

Students and Guests will meet back in Leone Cole before students are dismissed by college for Academic Advisement and Registration.

1:00 PM

(Students) Academic Advisement and Registration

Students will meet with faculty/staff from their chosen major. Here, specific information will be given about their major and department as well as specific requirements that may be needed to obtain a degree in a chosen field. This is a great time to ask any major-specific questions. Students will then meet with an academic advisor to register for classes.

(Guests) Parent Tips

Parents and Guests will remain in Leone Cole to hear from JSU Staff and Administrators. They will share tips and advice on how to successfully support your college student.



TREY CALDWELL:

"Get out of your room the first two weeks of college! There's so much going on around campus to not get out and meet new people. If you don't like the event, you can always leave, but if you never go, you'll never know what you missed out on! "

2:00 PM

Browse Session and Check-Out

(Students and Guests) Leone Cole Auditorium

Following registration, students will meet up with family and guests at Leone Cole Auditorium. Here, students will have their student ID made and can visit representatives from student services. Students will then check out to receive their Common Reading book and GO! T-shirt.

2:00 PM

GO! After Party

(Students and Guests) UREC

To conclude your day at orientation, students and guests can visit the University Recreation and Fitness Center. Here, students will be able to explore the UREC facility, enjoy music and snacks, and be entered to win a book scholarship. Representatives from student organizations will be available to answer questions and provide information about involvement.



ACADEMIC PROGRAMS & CONCENTRATIONS

UNDERGRADUATE ACADEMICS

COLLEGE OF ARTS AND HUMANITIES

Dr. Staci Stone, Dean

Art

- Art History
- Ceramics
- Drawing
- Graphic Design
- Painting
- Photography
- Printmaking

English

- Creative Writing
- Literature
- Professional Writing

History

Foreign Languages

- French
- Spanish

Integrated Studies

Music

- General Music
- Music Education
- Instrumental Performance
- Jazz Performance
- Piano Performance
- Vocal Performance

Theatre

- Performance
- Production

Film

COLLEGE OF BUSINESS AND INDUSTRY

Dr. Brent Cunningham, Interim Dean

Accounting

Economics

Finance

Management

- Human Resource Management
- Entrepreneurship
- Information Management/E-Commerce

Marketing

Applied Electronics Engineering

Applied Manufacturing Engineering

- Design and Automation
- Manufacturing Management

Occupational Safety and Health Management

Industrial Leadership

Communications

- Digital Journalism
- Broadcasting
- Public Relations

COLLEGE OF EDUCATION AND PROFESSIONAL STUDIES

Dr. Kimberly White, Dean

Curriculum and Instruction

- Early Childhood Education
- Elementary Education
- Special Education (P-12)

Family and Consumer Sciences

- Child Development (traditional and online)
- Community Nutrition
- Dietetics
- Hospitality and Culinary Management
- Human Sciences (traditional and online)
- Merchandising
- Family and Consumer Science; Business Marketing (Secondary Ed)

Secondary Education

- 6-12 Certification
- English Language Arts, General Science, Math, General Social Studies

ACADEMIC PROGRAMS & CONCENTRATIONS *CONTINUED...*

COLLEGE OF HEALTH PROFESSIONS AND WELLNESS

Dr. Tracey Matthews, Dean

Nursing

Respiratory Therapy

Kinesiology

- Health and Physical Education
- Exercise Science and Wellness
 - Human Performance
 - Clinical
- Sport Management and Recreation Studies
 - Sport Management
 - Recreational Leadership

COLLEGE OF SOCIAL AND BEHAVIORAL SCIENCES

Dr. Maureen Newton, Dean

Criminal Justice

Forensic Investigation

- Criminal Investigation
- Forensic Laboratory/Technician

Emergency Management

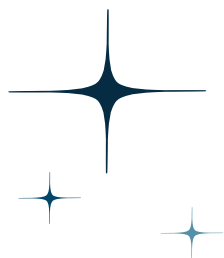
Military Science (ROTC)

Political Science

Psychology

Social Work

Sociology



COLLEGE OF SCIENCE AND MATHEMATICS

Dr. Tim H. Lindblom, Dean

Biology

- Ecology and Environmental Biology
- Marine Biology
- Pre-Health Professional Biology
- Organismal Biology
- Cellular and Molecular Biology

Mathematics

- Traditional Mathematics
- General Mathematics

Computer Science

- Information Assurance
- Game Development
- General Computer Science

Computer Information Systems

- Information Assurance
- Web Development
- General Information Systems

Chemistry

- Pre-Health Professional Chemistry
- General Chemistry with ACS Certification
- Medicinal Chemistry

Geography

- Geospatial Technology
- Certificate in Sustainable Trail Science
- Certificate in Drone Piloting and Spatial Data Analytics

Physics (minor only)

IJHA SIMS: "Take time out for yourself. Coming into college can be extremely overwhelming. From professors, class, and trying to get acclimated on campus while still trying to maintain a social life, sometimes you forget to take a minute to yourself. When you experience those feelings or moments of being overwhelmed just remember to take a step back, recharge, whether that be going to workout at the rec, yoga, going on a walk, meditating in your room or even sitting out on the quad. "



REGISTRATION

HOW TO REGISTER

Visit jsu.edu/go and click "Register for Orientation". MyJSU log in credentials can be found in your JSU acceptance letter.

After registering, check back regularly to access your list of tasks that should be completed before attending orientation. You may change your session date to any available, open session by logging into your reservation and clicking "dates".

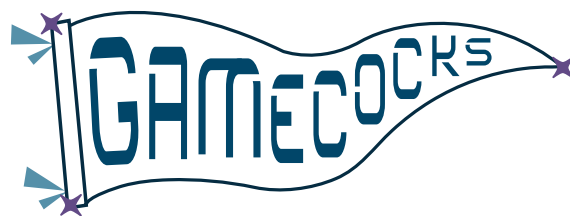
GO! OUTDOORS

GO! Outdoors gives incoming first-year students an opportunity to better connect with other first-year students and to JSU.

Adventure Recreation has designed an adventure-based experience to jumpstart the first-year students' ability to meet other incoming Gamecocks and to learn how to better face the challenges of being a college student ahead. This program is open to all experience levels and is only open top first-year students.



SCAN HERE TO
ACCESS YOUR
GO! ACCOUNT!



Each trip is specifically created to provide students with leadership experience to make the transition into college life smoother, and so that they may use these skills throughout their own college experience.



SCAN HERE
FOR MORE GO!
OUTDOORS INFO!



SESSION	TRIP DATES	REGISTER BEFORE
GO! Outdoors - June Session E First Time Freshman	JUNE 22 – 24 2022	JUNE 21, 2022
GO! Outdoors - July Session I First Time Freshman	JULY 14 – 16 2022	JULY 13, 2022





FIRST & SECOND YEAR EXPERIENCE

Houston Cole Library (Lobby)
700 Pelham Road North
Jacksonville, AL 36265-1602
www.jsu.edu/go
gamecockorientation@jsu.edu

ADDRESS SERVICE REQUESTED

WWW.JSU.EDU

FOLLOW GAMECOCK ORIENTATION ON SOCIAL MEDIA!



13-22 University Publications 2/22

JSU is an equal opportunity/affirmative action institution and does not discriminate based on age, religion, race, color, sex, veteran's status, national origin, or disability. Pursuant to Section 504 of the Rehabilitation Act of 1973 and Title II of the Americans with Disabilities Act of 1990, Jasmin Nunez, Title IX Coordinator, Suite 301-A, phone 256-782-5769 is the coordinator for Section 504/ADA.

Jacksonville State University is accredited by the Southern Association of Colleges and Schools Commission on Colleges to award bachelor's, master's, educational specialist, and doctoral degrees. Contact the Commission on Colleges at 1866 Southern Lane, Decatur, Georgia 30033-4097 or call 404-679-4500, for questions about the accreditation of Jacksonville State University.