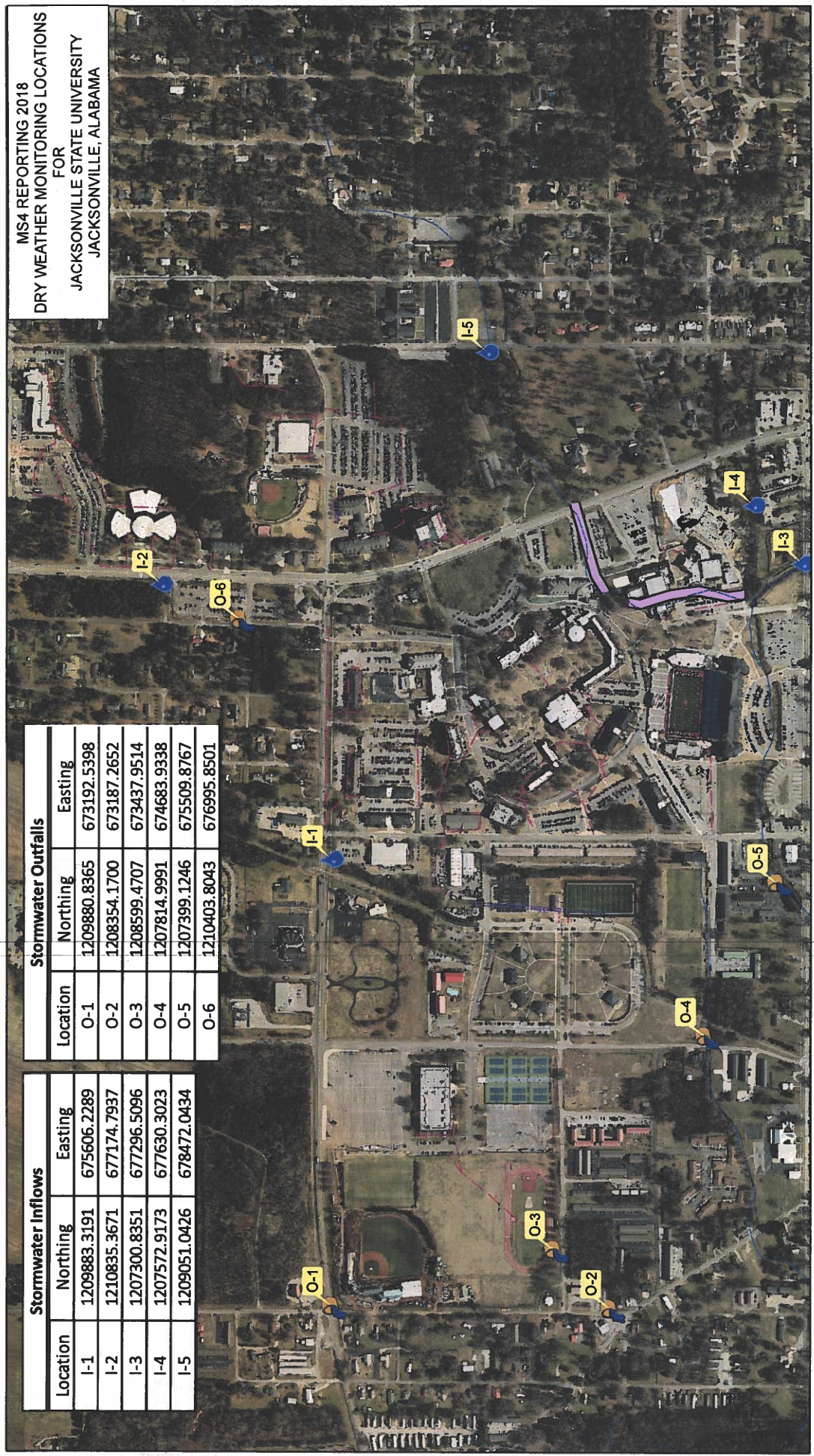


MS4 REPORTING 2018  
 DRY WEATHER MONITORING LOCATIONS  
 FOR  
 JACKSONVILLE STATE UNIVERSITY  
 JACKSONVILLE, ALABAMA

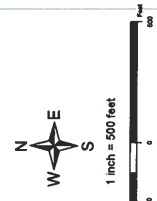
Stormwater Outfalls		
Location	Northing	Easting
O-1	1209880.8365	673192.5398
O-2	1208354.1700	673187.2652
O-3	1208599.4707	673437.9514
O-4	1207814.9991	674683.9338
O-5	1207399.1246	675509.8767
O-6	1210403.8043	676995.8501

Stormwater Inflows		
Location	Northing	Easting
I-1	1209883.3191	675606.2289
I-2	1210835.3671	677174.7937
I-3	1207300.8351	677296.5096
I-4	1207572.9173	677630.3023
I-5	1209051.0426	678472.0434



DATA: Source: Esri, DigitalGlobe, GeoEye, Earthstar Geographics, CNES/Airbus DS, USDA, USGS, AeroGRID, IGN, and the GIS User Community  
 FILENAME: \\jstusd\GIS\Projects\MS4\MS4\_010110\_1\_F.mxd  
 AUTHOR: Ryan Blank  
 DATE: 6/24/2018  
 DOCUMENT PATH: P:\11003\_010101 MS4 DRY WEATHER MONITORING.mxd

DISCLAIMER  
 This document is a representation of the survey data for planning purposes only. It is not intended for use in any legal proceeding or as a basis for any other action. The user assumes all liability for any errors or omissions in this document.



**JSU STORM SEWER**

- STORMWATER INFLOW (Solid Purple Line)
- BOX CULVERT (Dashed Purple Line)
- STORM SEWER LINE (Blue Line)
- STORMWATER OUTFALL (Dashed Blue Line)
- STORM SEWER LINE (DBL) (Double Blue Line)
- STREAM (BLUE LINE) (Blue Line)

**JBW&T, Inc.**  
 Consulting Engineering and Land Surveying  
 3746 SOUTH LITH STREET - GAINESDEN, ALABAMA 35904  
 TELEPHONE (256) 547-6379 - FAX (256) 547-5464  
 www.jbwat.com

"Helping to Make the World a Better Place"