

MILLENIUM MECHANICAL CONTRACTORS, INC.

P.O. BOX 637 LINCOLN, AL 35096 PHONE: (256) 761-1535 FAX: (256) 761-1537

EMAIL: milleniummechan@netscape.net

BIBB GRAVES HALL CONSTRUCTION SCHEDULE

START 02/26/2013
COMPLETE 04/26/2013 (60)

1ST WEEK

DEMO 3RD FLOOR CEILINGS
DEMO ALL ATTIC, ROOF, & 3RD FLOOR MECHANICAL
START CUTTING HOLES THROUGH ATTIC FLOOR

02/26/2013-03/03/2013 (6)

2ND WEEK

DEMO 2ND FLOOR CEILINGS
INSTALL CURBS ON ROOF
HANG ALL UNITS 3RD FLOOR & ATTIC
START REFRIERANT PIPING IN ATTIC
COMPLETE HOLES THROUGH ATTIC FLOOR

03/04/2013-03/10/2013 (7)

3RD WEEK

SET CONDENSERS ON ROOF
COMPLETE FAN COIL PIPING & START PIPING CONDENSERS
START ATTIC & 3RD FLOOR DUCT
DEMO 1ST FLOOR CEILINGS

03/11/2013-03/17/2013 (7)

4TH WEEK

DEMO 2ND FLOOR MECHANICAL
HANG ALL 2ND FLOOR EQUIPMENT
START 2ND FLOOR REFRIGERANT PIPING
COMPLETE ALL 3RD FLOOR & ATTIC DUCT WORK

03/18/2013-03/24/2013 (7)

5TH WEEK

03/25/2013-03/31/2013 (7)

DEMO 1ST FLOOR MECHANICAL
HALL ALL 1ST FLOOR EQUIPMENT
START DUCT ON 2ND FLOOR
START PULLING CONTROL WIRES 3RD FLOOR & ATTIC
RUN DRAINS IN ATTIC & ON 3RD FLOOR

6TH WEEK

04/01/2013-04/07/2013 (7)

COMPLETE DUCT ON 2ND FLOOR
COMPLETE REFRIGERANT PIPING ON 2ND FLOOR
START DUCT & REFRIGERANT PIPING ON 1ST FLOOR
INSTALL 3RD FLOOR CEILINGS
CONTROL WIRES ON 2ND FLOOR
RUN DRAINS ON 2ND FLOOR

7TH WEEK

04/08/2013-04/14/2013 (7)

COMPLETE DUCT & REFRIGERANT PIPING 1ST FLOOR
BUILD NINE (9) CHASES AROUND REFRIGERANT PIPING
INSTALL 2ND FLOOR CEILINGS
CONTROL WIRES ON 1ST FLOOR
RUN DRAINS ON 1ST FLOOR

8TH WEEK

04/15/2013-04/21/2013 (7)

INSTALL 1ST FLOOR CEILINGS
COMPLETE ALL PATCHING & PAINTING

9TH WEEK

04/22/2013-04/26/2013 (5)

PUNCH, FINAL, & CLEAN OFF SITE

KEY DATES

START TURNING ON EQUIPMENT
TEST & BALANCE TO START
OUR PORTION OF THE CONTROLS

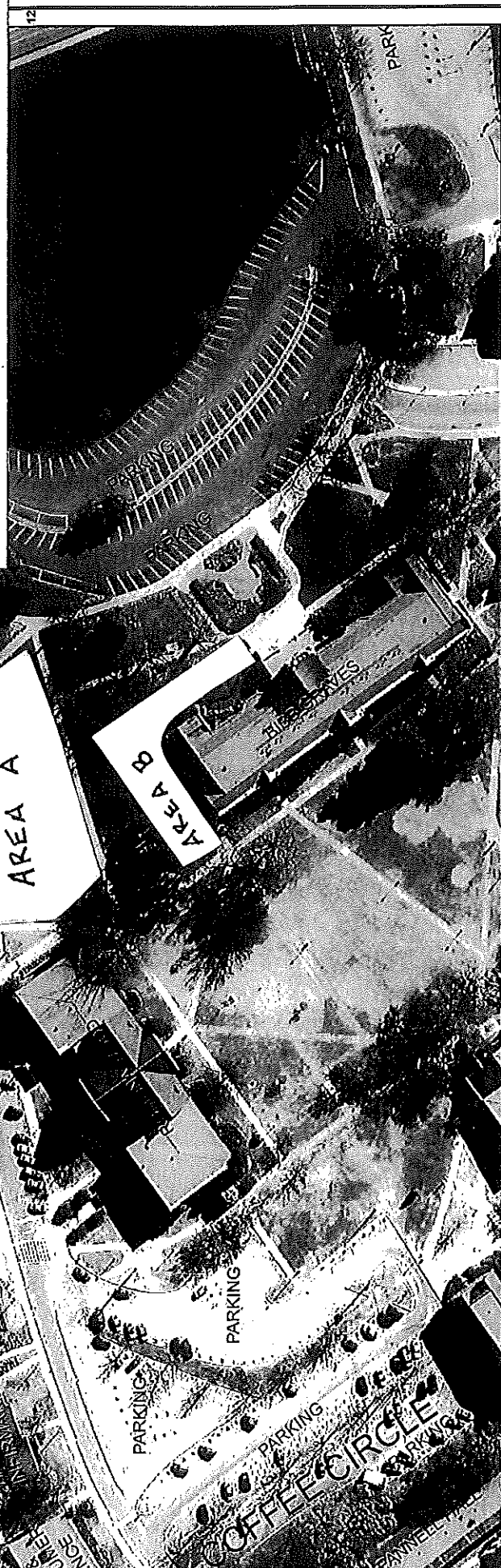
APRIL 5TH
APRIL 15TH
APRIL 19TH

AREA A: Entire area will be taped off and barricaded. There will be no pedestrian traffic allowed during construction.

1. Contractor parking. If necessary, parking will be granted along the front of Ayers Hall
2. Contractor storage containers for tools, equipment, & supplies
3. Contractor restroom facilities
4. Contractor designated break & lunch area. Contractor will not be allowed on the quad, cafeteria, etc.
5. Contractor designated tobacco/smoking area.

AREA B: Barricades near front will prevent access around the North end of Bibb Graves Hall. Contractor designated entrance will be first floor North end near mechanical room. This exit will be blocked and marked from inside.

1. Contractor designated entrance.
2. Roll-off dumpster container will be located on the North end just outside entrance.

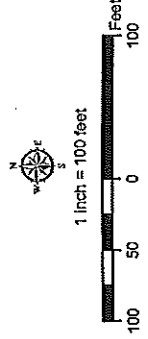


Jacksonville State University

306 North Fifth Street - P.O. Box 681
Columbus, Georgia 31906
Phone 706/325-6400 Fax 706/325-6404
OFFICE@JBW&E.com

Grid 13

31	30	29	28
24	25	26	27
23	22	21	20
16	17	18	19
15	14	13	12
8	9	10	11
7	6	5	4



Date Type: Android Map Service
 Server: https://services.arcgis.com/
 Name: ParcelOutline
 MapServiceType: WMS
 Coordinate System: NAD_83_StatePlane_Alabama_Georgia_FIPS_5101_Feet
 Author: D. Nemer Morrow
 Document Path: C:\GIS\GORTHO\400_SHEETS.mxd

DRAWING