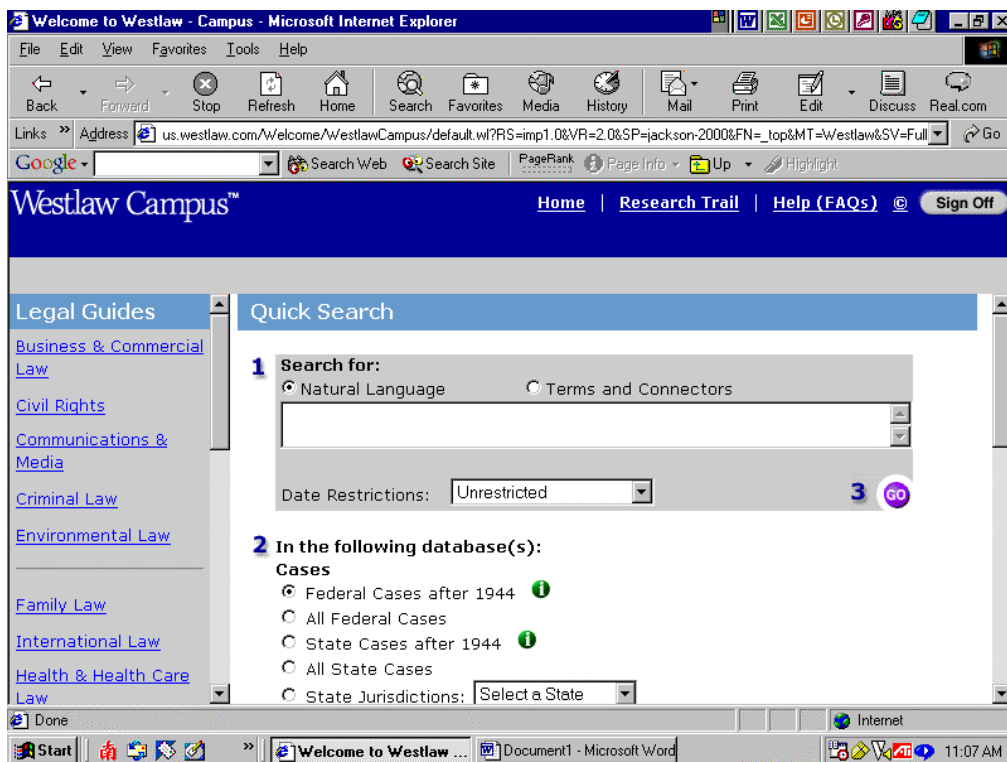


Find Cases and related articles Via “West Law Campus” Database

How to get access to “West Law Campus” Database:

1. Go to Library Homepage (<http://www.jsu.edu/depart/library>)
2. Click on “Find Articles (Databases)” (<http://www.jsu.edu/depart/library/graphic/articles.htm>) link
3. Select “Westlaw Campus” (<http://lib-proxy.jsu.edu:80/login?url=http://www.westlaw.com/signon/default.wl?sp=jackson-2000&rs=imp1.0&vr=1.0&cbhf=none>) under “Database by Title” on the left of the table by clicking the drop down box, click on “GO”
4. Select “I Agree” on “Westlaw Campus” agreement page, then click on “Go” button, and you will see the following “search page screen”:



5. Scroll down, until you see “Find A Document” bar (in Blue)
6. Type your citation according to the example, click on “Go” button on the right
7. Click on the part you need print, then click on “File”, “Print (Print Frame)”

Find case related articles:

1. Go to “Westlaw Campus” database “search page screen” according to the above steps
2. Type the name of your case in box “1” under “Quick Search”
3. Click on the radio button in front of “Journals and Law Reviews” form “Encyclopedia” under “2”
4. Select “All Journals and Law Reviews” from the drop down on the right
5. Click on “Go” button under “1”.