

# **ANNUAL REPORT FOREWORD 2008**

**The Jacksonville State University Police Department exists to protect life and property, maintain a successful traffic system, prevent crime and be of general service to the University Community. We strive to fulfill these responsibilities in a professional and pleasant manner.**

**Our primary mission is of law enforcement support to the campus community. It is our intention to efficiently fulfill our responsibilities, serving all University personnel equally. We provide a secure and peaceful campus environment that enables the University to fulfill its educational mission. We also believe ourselves to be a good visible representation of the University to visitors and potential students. Providing quality services to the University community assists in student recruitment and retention as well as improving the quality of life for everyone at Jacksonville State University.**

**Our employees feel strongly that public relations are a vital aspect to our role as campus police. All of our employees try to maintain high standards of conduct and proficiency in the performance of their duties. We pledge to improve our service by improving the skills of our employees through continuing education, in-service training programs, experience and structured self-improvement programs.**

**The University Police Department performs a vital role in the total University program. We are available around the clock to meet the many diverse needs of students, faculty and staff. As trained professionals, we offer assistance in emergencies, either directly or through communication with campus personnel and off-campus agencies. Being commissioned, sworn police officers, we have the authority to maintain the peace and safety of all University residents and this helps to create a sense of security and safety on campus. The University Police Department is directly and indirectly involved with almost every activity on campus.**

**The University Police Department recognizes that meeting student needs is a priority. We realize that every responsibility, duty, and policy must be geared to meet the needs and ensure the safety of Jacksonville State University students. It is our policy, therefore, to have open, clear communication with every student. We are aware that each officer is not only a representative of the "law", but also a representative of the University and friend to each student. It is our philosophy and policy to be fair and friendly, but firm when appropriate.**

**The University Police Department Annual Report reflects the organization and activities of the Department from January 1, 2008 through December 31, 2008. This report is intended to be a succinct overview of how the UPD is structured, the types of activities in which it becomes involved, and a statistical accounting of**

what occurred throughout the year. It provides a perspective of the role of the Department and its impact on the University and the surrounding community. The Annual Report also serves as an assessment of the services delivered by the UPD and affords a basis for planning and decision-making. Caution should be exercised in using the information herein for comparative purposes or for drawing conclusions.

Our officers and staff are proud to serve Jacksonville State University and we are dedicated to promote professionalism in its approach to law enforcement and service.

Respectively submitted,

A handwritten signature in black ink, appearing to read "Shawn Giddy". The signature is written in a cursive style with a large initial 'S'.

**Chief Shawn Giddy**  
**Director of Public Safety**

# **EXECUTIVE SUMMARY FOR ANNUAL REPORT 2008**

The 2008 ANNUAL REPORT (January 1-December 31) provides a comprehensive description of the Jacksonville State University Police operations, services, and activities along with crime statistics and basic analysis of data. This Executive Summary offers a description of the 2008 activities. While caution should be exercised in drawing conclusions and making comparisons, statistics may serve to measure differences and determine to some degree the effectiveness of law enforcement programs. The statistics contained in this report are presented in a different format than those reported to the Department of Education. The Department of Education statistics are based upon FBI definitions.

In addition to the law enforcement role and functions of the University Police Department, demands for services have increased this year. More requests for additional officers for routine police services, more complex criminal investigations, more security being requested at athletic events and other special events have placed a strain on manpower availability. Demands for more parking services, escorts, special security details, fire safety functions, and numerous other special requests have stretched our personnel and budget resources beyond their limits.

Respectively submitted,



**Chief Shawn Giddy  
Director of Public Safety**

**ANNUAL REPORT  
CRIME STATISTICS  
2008**

<u>Incident Offense</u>	<u>Incidents</u>	<u>Arrests</u>
Assault	13	6
Harassment	21	5
Kidnapping	0	0
Menacing	1	0
Missing Persons	0	0
Murder	0	0
Other Sex Crimes	1	1
Rape	1	0
Robbery	0	0
Totals	37	12

<u>Incident Offense</u>	<u>Incidents</u>	<u>Arrests</u>
Arson	0	0
Auto Theft	2	2
Burglary	19	0
Burglary of Auto	53	1
Criminal Mischief	29	0
Criminal Trespass	3	3
Forgery	0	0
Fraud	8	5
Receiving Stolen Property	0	5
Theft of Property	120	6
Totals	234	22

<u>Incident Offense</u>	<u>Incidents</u>	<u>Arrests</u>
Disorderly Conduct	4	1
Liquor Law	1	8
Public Intoxication	2	3
VAUSCA (Drug Violations)	7	12
Weapons Violations	1	0
<b>Totals</b>	<b>15</b>	<b>24</b>

<u>Incident Offense</u>	<u>Incidents</u>	<u>Arrests</u>
DUI	0	11
<b>Totals</b>	<b>0</b>	<b>11</b>

<u>Other Arrests</u>	<u>Incidents</u>	<u>Arrests</u>
	0	8
<b>Totals</b>	<b>0</b>	<b>8</b>

**Police Reports Filed**

Incident Reports	318
Offense Reports	251
Arrests	64
Accident Reports	47

**Arrests**

Misdemeanor Charges	65
Felony Charges	12

**Municipal Ordinance Violations 7**

**Traffic Enforcement**

**Traffic Violations 690**

**Traffic Citations 295**

**Verbal or Written Warnings 388**

**On Campus Citations 7**

**Judicial Hearings**

**Hearings Requested 121**

**Judicial Actions 91**

**Miscellaneous Calls for Service**

**911 Calls 162**

**Alarm Response 119**

**Assist Other Agencies 453**

**Booted Vehicles 86**

**Building Closing 2,297**

**Building Openings 3,694**

**Building/Security Checks 291**

**Buildings/Roadways/Zone Checks 921**

**Escorts 359**

**Fingerprints (Teacher Certifications) 47**

**Medical Emergency Calls 18**

**Motorist Assists- Mechanical 170**

**Motorist Assists- Unlock Vehicle 457**

**Noise Complaints 120**

**Suspicious Activity 283**

**Other Police Related Calls 1,742**

**Cost of Crimes**

Damage	22,190.42
Stolen	91,810.59
Total	114001.01
Recovered/Confiscated	32,206

**Internal Investigations** 0

Founded N/A

Unfounded N/A

**UNIVERSITY POLICE DEPARTMENT  
ANNUAL REPORT  
STAFF REPORT  
2008**

**Command and Administration**

Chief Shawn Giddy  
Sergeant Carl Preuninger  
Sergeant Rob Schaffer  
Sergeant Brian Mann

**Shift Supervisors**

Corporal Rickey Gaither  
Corporal Brandon Singleton  
Corporal Jerry Perkins

**Patrol Officers**

Officer Donyale Richard  
Officer Ashley Roper  
Officer Mark Meier  
Officer Matt Langley  
Officer Elizabeth Hill  
Officer William Lowe  
Officer Michael Devoe

**Safety & Security Officers**

**Security Supervisor Michelle Page  
Officer Tony Mabrey**

**Parking Enforcement Officer**

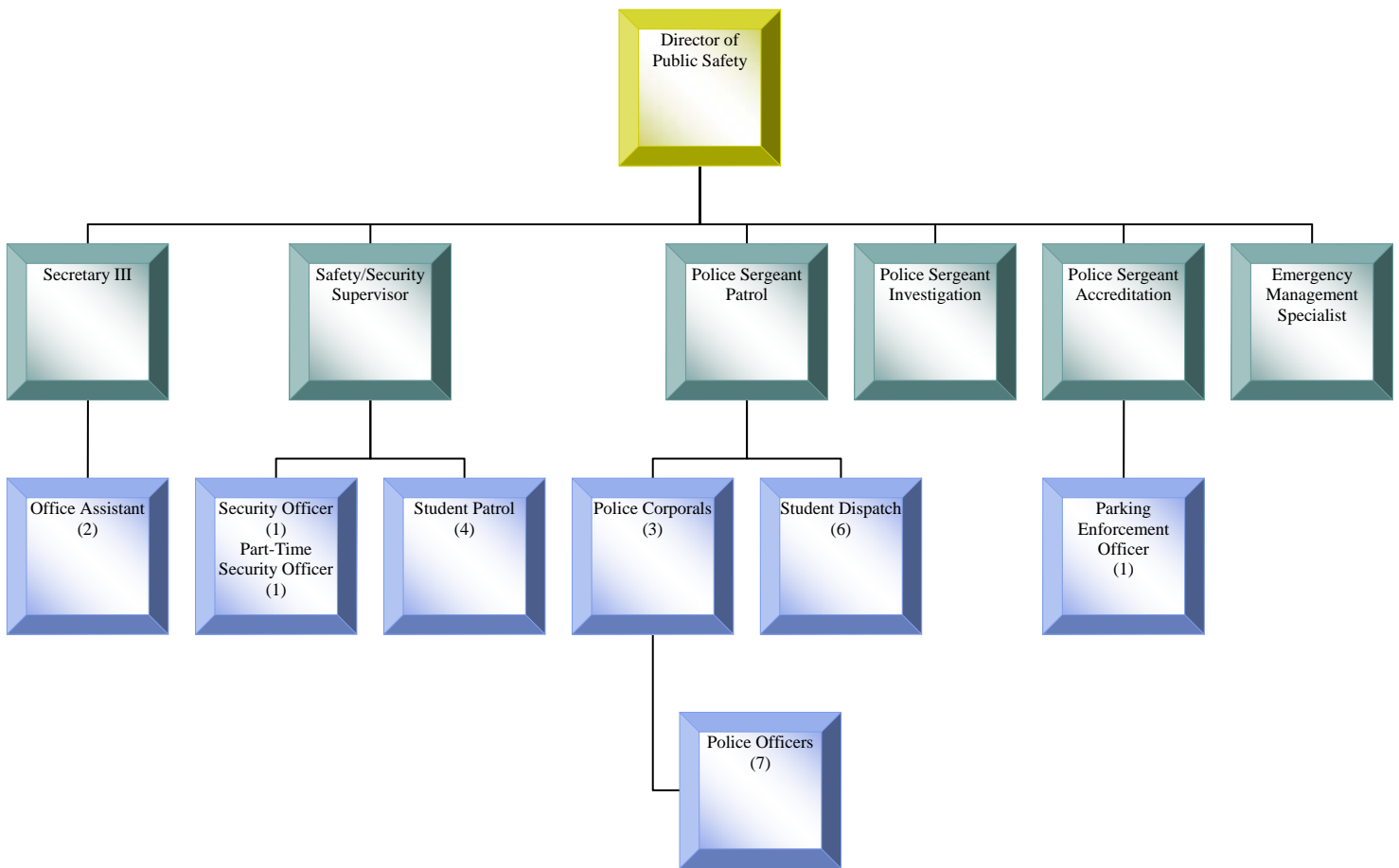
**Officer Buddy Smith**

**Office Administration**

**Mrs. Karen Bates, Secretary III**

**Emergency Management**

**Specialist Melonie Carmichael**



Jacksonville State University Police Department  
 Organizational Chart December 2008  
 Chief Shawn Giddy  
 The University Police Department reports to the  
 Associate Vice President of Enrollment Management and Student Affairs

# **UNIVERSITY POLICE DEPARTMENT ANNUAL REPORT NARRATIVE DESCRIPTION OF SERVICES 2008**

**Personnel**- The UPD provides continuous security and law enforcement services to the University community. Twenty-four hour patrol and dispatch services are provided with access to municipal emergency services. All University police officers are certified by the Alabama Peace Officers Standards and Training Commission and are sworn with all of the powers of a peace officer of the State of Alabama. Our jurisdiction extends to the city limits of Jacksonville.

**Education**- Education is stressed for all UPD personnel. Several officers hold degrees and others are working toward their degrees at JSU. To maintain the high standards of the department and to keep abreast of new developments and rapidly changing laws, in-service training sessions are held at department meetings. Officers often take advantage of numerous continuing education programs offered in subjects ranging from criminal investigation to dealing with the emotionally disturbed. Some officers are also trained in basic firefighting and emergency medical care.

**Public Relations**- Good public relations are of major importance to the UPD. We are always conscious of the image our officers project while representing our department and JSU. We strive to ensure that a visitor's first impression of Jacksonville State University is a positive one. Maps and guest parking permits are available at the UPD office 24 hours a day. We also extend our efforts to the local City community to maintain cooperative relations. Department representatives present programs on varied topics to local civic clubs, schools, and other interested groups. The UPD is committed to involvement in the total University community. A high-visibility foot patrol program, for example, has been well accepted and is considered very productive.

At the beginning of each term, officers present programs to campus residents on fire prevention, personal security, and crime prevention. Perhaps the most important aspect of community relations on campus is our informal, interpersonal contacts with students. A small campus gives students the opportunity to know officers as friends as well as law enforcement professionals.

**Communications**- UPD radio communications operators maintain telephones and two-way radios on a 24-hour basis to give information and respond to emergencies. Operators can instantly dispatch the Police, Fire Department or Emergency Medical Services (EMS) when needed. Communication links with other local and state emergency services provide for emergency resources as needed. NCIC links provide information officers require when conducting traffic stops or criminal investigations.

Radio operators monitor the National Weather Service radio network and issue storm warnings when necessary. A campus-wide alerting system notifies the

Jacksonville State University community of threatening weather conditions. Over 795 JSU staff, faculty and students now trained in the CSEPP response plan.

Our commitment to the University community is one of service and protection, attained by high standards of training and education, and a sincere dedication to the members of the community. The UPD is always available when needed. This last year the UPD created the position of Emergency Management Specialist to oversee the Emergency Operation Planning for the University community.

**Parking and Traffic-** Parking enforcement and traffic control is a very important function of the University Police Department. Color coded zone parking provides for an orderly parking system. The UPD officers enforce parking regulations around the clock. Vehicular traffic control is important to the safety of everyone within the campus community. UPD officers enforce all State and local traffic laws on and around the campus.

**Bicycle Patrol-** In an effort to enhance public relations and crime prevention measures, the University Police Department utilizes a community-oriented policing method—Bicycle Patrol. The Bicycle Patrol Program involves uniform police officers patrolling throughout campus on bicycles. These officers can provide most police services and respond to emergency calls. Perhaps the highlight of this Program is the opportunity for more one on one interaction between officers and students. Bicycle Patrol has proven successful in both public relations and effective response.

The University Police Department has continued to be innovative and provide exemplary programs for the campus community. We have continued and enhanced the Bicycle Patrol Program, which has received many positive comments. We developed and improved our Public Safety Internet Site that provides students, faculty and staff comprehensive information on crime prevention and police services, and complies with the requirements of the Campus Security Act of 1990. UPD is certified as an Alabama Amber Alert agency and we continue a wide variety of crime prevention activities aimed at campus safety.

Through in-service and advanced training, our officers are continually being oriented and prepared to serve the campus community. Annual crime analysis has enabled us to more effectively direct our efforts and resources to where crime-related incidents occur. We have adopted a community-oriented approach to policing. We have improved our effectiveness by using an online "Citizen Contact Survey" form and a "Crime stoppers" online complaint form. We have established an information website on the Internet and completed a national accreditation process with the Commission on Accreditation for Law Enforcement Agencies (CALEA). UPD was reaccredited by CALEA in November 2006. The next reaccreditation is scheduled for August 2009.

# **UNIVERSITY POLICE DEPARTMENT ANNUAL REPORT CRIME PREVENTION 2008**

**A community equates police performance in terms of response time to calls for service, quality of interaction with citizens and satisfaction level with the officer's handling of a call for service. However, a community often translates increased or decreased crime and arrest trends into police performance. What are often overlooked are various efforts of police to prevent crime. Deployed in the proactive posture, the crime prevention efforts compliment the reactive segment of the Department, i.e., visible patrol units who either walk a beat or patrol with marked vehicles. Crime prevention demands constant interaction and outreaching to students, faculty and staff combined with unique training ranging from technical knowledge of security hardware, professional insights shared with individuals and community organizations.**

**Jacksonville State University's crime prevention program stresses community awareness and interaction through the dissemination of material and presentations geared towards familiarizing students, faculty and staff with their responsibility in reducing criminal opportunity. Such programs range from crime prevention presentations to on-sight inspections. Our officers have been involved in numerous presentations throughout the University community ranging from talks within residence halls to specially targeted programs for local schools. We were actively involved in a variety of awareness and prevention programs this year. Crime prevention brochures, posters and handouts were utilized in an effort to make all members of the campus community aware of the potential for crime. Timely warnings of potential dangers and public service announcements would be sent to members of the campus community by e-mail, the JSU news wire, and on community news bulletin boards around campus.**

**Crime prevention at Jacksonville State University is a community-based program. Involvement by all members of the campus community is essential to the success of the program. The UPD strives to provide leadership and direction for this effort. The main goal is to improve the quality of life for members of the campus community.**

# **UNIVERSITY POLICE DEPARTMENT ANNUAL REPORT TRAINING 2008**

**The importance of training for police officers, especially within an academic community, cannot be overemphasized. University Police officers must be service oriented given their environment, as well as capable of providing law enforcement services. Therefore, the University Police Department utilizes many resources to ensure that the officers patrolling the community are of the highest caliber. The Jacksonville State University College of Criminal Justice offers a comprehensive criminal justice program that many of our officers participate in. The Northeast Alabama Regional Law Enforcement Academy provides basic police training for all entry-level officers. These 480 contact hours provide certification by the Alabama Police Officers Standards and Training Commission. In 2007 two new UPD officers were hired, Officers' William Lowe and Michael Devoe. They attended the police academy in January 2008. The Academy also offers numerous advanced training classes that our officers attend. Our personnel also receive training sponsored by the Alabama Peace Officers' Association, Alabama's State Police Academy, the FBI, and other agencies. Department in-service training is also conducted. During 2008 all Departmental personnel received the required advanced or continuous training.**

**UNIVERSITY  
POLICE DEPARTMENT  
ANNUAL REPORT  
FACILITIES AND EQUIPMENT  
2008**

The University Police Department is located on the first two floors in Salls Hall. The designated office space consists of 8,248 square feet.

The major equipment items used by the Department in the delivery of services include the following:

1996 Oldsmobile 88 (Investigation Sergeant)  
1993 Buick LeSabre (Student Patrol)  
1999 Ford Crown Victoria (Operations Supervisor)  
2001 Ford Crown Victoria (Patrol Unit)  
1999 Ford Crown Victoria (Patrol Unit)  
2003 Ford Crown Victoria (Chief of Police)  
2004 Ford Crown Victoria (Patrol Unit)  
2005 Ford Crown Victoria (Patrol Unit)  
2001 Ford F-150 4 x 4 Extended Cab (Security)

1-800 MHZ Base Unit (Upgraded December 2006)  
8 Mobile Car Radios (VHF)  
2 Motorola Radius Scanner Radios  
1 Dictaphone Voice Processor (Call Recording)  
20 Cellular Phones  
17-800 MHZ Handsets (Upgraded 2006)  
7-800 MHZ Mobile Car Radios (upgraded 2006)

# **JACKSONVILLE STATE UNIVERSITY UNIVERSITY POLICE DEPARTMENT ANNUAL REPORT 2008**

## **CAMPUS CRIME VICTIMS POLICY**

Jacksonville State University encourages victims and witnesses of crime to report offenses to the police. If a crime occurs on campus it should be reported to the University Police. UPD will investigate crime reports and seek adjudication in municipal or district court as appropriate. Victims who do NOT wish to make a report to the police may report a campus crime to the Jacksonville State University Judicial Coordinator or any other University official.

## **CAMPUS SECURITY POLICY**

**General Policy-** It is the policy of Jacksonville State University for all employees to abide by the Student Right to Know and Campus Security Act of 1990 and its 1998 amendments. This act, also known as the Jeanne Clery Bill, requires University employees with significant responsibilities for student and student activities to report crimes which are reported to them, but not reported to the police, to the Jacksonville State University Judicial Coordinator for review, appropriate action and documentation.

**Specific Administrative Responsibilities:** Jacksonville State University Administrators, Deans and Directors are responsible for reporting crimes which are reported to them or their subordinates, but not reported to the police, to the Judicial Coordinator. These reports shall be transmitted to the Judicial Coordinator in writing within 24 hours of receiving the report. Crime victims should be encouraged, but not forced, to report crimes to the police and should be notified of counseling services available. The Jacksonville State University Judicial Coordinator shall maintain records of unreported crimes and dispositions, and shall prepare an annual summary of statistical data for publication in the Jacksonville State University Annual Crime Report.

The Director of Public Safety is responsible for compiling Uniform Crime Report information of offenses reported to the police for the Alabama Criminal Justice Information Center and Jacksonville State University Annual Crime Statistics. This report highlights statistics for the past three years in the following crime categories: murder, manslaughter, sex offenses (forcible and non-forcible), robbery, aggravated assault, burglary, motor vehicle theft, and arson. Statistics for the following categories of arrests or referrals for campus disciplinary action shall also be included: liquor law violations, drug abuse violations and weapons possession. This information is made available to current and potential students and employees, and the U. S. Department of Education. The Director of Public Safety will make available to the public a current log (activity report) of all crimes reported to the Jacksonville State University Police Department.

The Director of Counseling is responsible for facilitating, presenting and documenting programs and seminars aimed at combating binge drinking and violence against women. Federal grants are available to fund these programs.

All Deans and Directors are required to annually report to the Director of Counseling programs and seminars presented in their areas with the purpose of decreasing or eliminating binge drinking or violence against women.

Crimes that are committed away from the main campus must be included in the annual report if they occur on Jacksonville State University owned property, or at locations dedicated to Jacksonville State University instruction or Jacksonville State University student activities. These crimes should also be reported to the local police.

Crimes, such as assault or criminal mischief, which are obviously hate crimes, shall be reported as such by category of prejudice. The Jacksonville State University Judicial Coordinator is responsible for compiling statistics and preparing an annual summary of student hearings involving alcohol and drug abuse, and weapons violations.

#### **CRIMES REPORTED TO THE POLICE**

See University Police Department Statistics at: [police.jsu.edu/dae.html](http://police.jsu.edu/dae.html)  
Crimes Reported to University Officials (Not reported to the Police)

1999	September	Rape at Campus Fraternity House
2000	-----	None Reported
2001	-----	None Reported
2002	-----	None Reported
2003	-----	None Reported
2004	-----	None Reported
2006	-----	None Reported
2007	-----	None Reported
2008	-----	None Reported

#### **Judicial Coordinator's Report**

Judicial hearings conducted in 1999, 2000, 2001, 2002, 2003, 2004, 2005, 2006, 2007, and 2008 were case referrals from the University Police Department. Those incidents are reflected in UPD statistics.

Crime Prevention Programs Crime information and statistics are given to students and employees each year. In addition, law enforcement, safety, security, traffic and parking information is available to the campus community on the Internet at the following address: [police.jsu.edu/prevention.html](http://police.jsu.edu/prevention.html)

University Safety and Security Officers are responsible for the security and safety of the University. The University Police Department currently has 2 full-time and one part-time safety and security personnel as well as numerous Student Patrol Officers. Security Officers are responsible for opening administrative buildings and securing them at the end of the day. Through routine patrol, all Jacksonville

State University owned areas and buildings are checked regularly by police. In an effort to provide the best possible emergency services to the Jacksonville State University community, UPD maintains close relationships with all local emergency services through a number of mutual aid agreements.

### **Residence Halls**

Residence hall security is very important at JSU. Students share in the responsibility to ensure the security and access control of each residence hall. After hours security is coordinated through the University Police Department and the JSU Housing Office to provide supervision to the residence hall security personnel. These security personnel are on duty after hours to identify visitors and control access into the residence halls and report violations to the University Police and the Jacksonville State University Housing Office. Residence hall security personnel are in direct contact with the University Police by radio and telephone and are trained to summon police assistance if necessary. All side and rear exit doors remain locked and all access is through each residence hall's main door. All exits can be used in case of emergency; the door locking mechanism only prevents entry into the building. Individual rooms are accessed by issued keys; these keys are controlled by the Jacksonville State University Housing Office. Residence Hall Directors have master keys that are used to gain entry into individual rooms in the event of an emergency. Fire drills are conducted regularly in the residence halls to ensure that all students are thoroughly familiar with emergency evacuation routes and fire safety procedures.

The following regulations and guidelines should be followed:

- Only authorized individuals with proper identification are allowed to enter residence halls.
- Door propping is strictly forbidden. Do not tamper with door locking mechanisms.
- Violators of security policies are subject to disciplinary action and/or criminal arrest.
- Report any maintenance deficiency that may compromise security to the Housing Maintenance Department (782-5449) and/or the UPD (782-5050).
- Do not sign in people you do not know and don't intend on staying with. You are responsible for the people you sign in.
- Think about whether you want to leave notes or signs on your door letting people know you are out of your room for extended periods of time. This can alert potential thieves to your absence.
- Always lock your windows when you leave your room.

- **Always lock your door when leaving, even if only going down the hall or to the bathroom.**
- **Do not allow strangers to enter your room unless they are properly identified. If a stranger does enter your room, demand that he/she leave. If he/she refuses, create a commotion and leave quickly. Contact the University Police immediately at 782-6000.**
- **Don't leave money, jewelry, credit cards, telephone calling cards, or other valuable items in your room. Do not lend your telephone credit card to anyone. Secure your valuables elsewhere when on vacation.**
- **If you are accosted in a hallway or public area of a residence hall report it to the campus police as soon as possible. If you feel that you are in immediate danger, dial 782-6000 or 911 and explain the situation to the University Police. Be prepared to give the location of the incident if you have left the vicinity. If the danger has passed, call the University Police at 782-5050 and explain the situation to them.**

### **Apartment Security**

**The University Police routinely patrols University owned buildings and will assist you upon your request to discuss any concerns that you may have regarding additional security measures. Here are a few guidelines that can be followed in order to maintain your security.**

- **Keep doors and windows locked.**
- **Do not open your door for strangers. If someone comes to your door soliciting, notify the University Police immediately. Soliciting is prohibited on University property.**
- **Report all security deficiencies to the University Housing Maintenance Department (782-5449) and or UPD (782-5050)**
- **Meet all your visitors at the door; do not open the door at all until they have positively identified themselves. If you are unsure of their identity or intentions, contact the University Police and ask for assistance.**
- **Always lock your doors and windows when leaving your apartment.**
- **Do not tamper with the door or window locking mechanisms.**
- **Think about whether you want to leave notes or signs on your door letting people know that you are out of your apartment for an extended period of time. This may alert potential thieves to your absence.**
- **Do not let strangers into your apartment, if one enters demand they leave immediately. If they refuse create a commotion and leave your apartment immediately. Contact the University Police at the emergency number 782-6000 or 911.**

- **Don't leave large sums of money, credit cards, jewelry or other valuable items in you apartment while you are gone. Secure valuables elsewhere while on vacation.**
- **If you are accosted outside your apartment or in a public area outside your apartment, report it to the campus police as soon as possible. If you feel that you are in immediate danger, dial 782-6000 or 911 and explain the situation to the University Police. Be prepared to give the location of the incident if you have left the vicinity. If the danger has passed, call the University Police at 782-5050 and explain the situation to them.**

**Jacksonville State University has provided eight outside emergency phones (Blue Light) in the event you need assistance. These phones are connected directly to the University Police Department. Should you activate one of the emergency phones you will be in direct contact with the police dispatcher who will ask you to state the nature of the emergency. Police will be dispatched to your location regardless of the nature of the call. Emergency phones are located near Sparkman Hall, Martin Hall, Houston Cole Library, Curtiss Hall, JSU Track, Stephenson Gym, the Quad, and Wallace Hall.**

## **STUDENT CODE OF CONDUCT**

### **A. Alcohol Policy**

**Possession or consumption of alcoholic beverages on the campus of Jacksonville State University is expected to conform to the laws of the State of Alabama and City of Jacksonville. In summary, these laws prohibit the following:**

- 1. Possession, use, or purchase of liquor, beer, or wine by persons under 21 years of age. (Code of Alabama, 28-3-266)**
- 2. Consumption of alcoholic beverages in unlicensed public places. (Municipal of Jacksonville Ordinance #365, Drinking in Public)**
- 3. Sale or advertisement of sale of alcoholic beverages without a license. (Code of Alabama, 28-3-60:10)**
- 4. Public drunkenness. (Code of Alabama, 13A-11-10)**
- 5. Providing liquor, beer, or wine to an underage individual. (Code of Alabama, 28A-3A-25(a)(3))**
- 6. Sale of alcoholic beverages on Sunday. (Code of Alabama, 28-3-261)**

**7. Driving while under the influence of alcohol or controlled substances. (Code of Alabama, 32-5A-191)**

**Enforcement-** These laws are enforceable by University Police as well as local and state law enforcement authorities. In addition to the above, Jacksonville State University residence hall rules and regulations specifically prohibit the following:

- a. Consumption of liquor, beer, or wine in the hallways, reception rooms, and lounges.
- b. Loud or disruptive behavior, interference with the cleanliness of the residence halls, or drinking habits that otherwise interfere with the rights of residents to study, sleep, and have privacy within their rooms.
- c. Violation of Jacksonville State University alcohol policy by students under 21 years of age will be subject to parental notification and disciplinary sanctions.

**University Sanctions-** Alcohol abuse violations of the Student Code-of-Conduct at Jacksonville State University will be handled as follows:

**1. First-time violators:**

- a. Administrative hearing with appropriate penalty, or
- b. Counseling and evaluation

**2. Repeat violators:**

- a. Administrative hearing with the possibility of suspension or expulsion
- b. If under age of 21, parental notification of violation

**B. Disruptive or Deleterious Behavior**

Students who demonstrate a documented pattern of frequent disruptive or deleterious (self-harming) behavior will be subject to intervention and, possibly, disciplinary action. Intervention may include referrals to health professionals on or off campus, notification of family, or other responses deemed appropriate to the circumstances. Disciplinary action may include probationary periods, suspension, or expulsion.

**C. Drugs**

**1. No student shall possess or distribute an illegal drug as defined by state law. Such possession or distribution is prohibited in any building or on any property owned or operated by the University. Possession is defined to include any area or property for which the student is responsible.**

**2. University policy conforms to state law with regard to drug paraphernalia.**

#### **D. Dangerous Practices**

No student shall engage in any activity which shall endanger the lives or safety of that student or of others in any building or on any property owned or operated by the University. This includes, but is not limited to, the following activities:

- 1. The use or possession of fireworks, firecrackers, gunpowder, or any dangerous chemicals or explosive materials.**
- 2. Inappropriate or dangerous use of fires, open flames, candles, matches, or other flammable materials in all residence halls, apartments, or in any other building owned or operated by the University.**
- 3. Blocking or in any way preventing the use of or access to fire exit doors, residence hall room doors, and building hallways.**
- 4. Improper use of electrical appliances or wiring which creates a fire hazard. (Activities carried out in science classes or laboratories under faculty guidance are exempt from this policy.)**

#### **E. Destruction or Attempted Destruction of Property**

- 1. No student shall intentionally or negligently damage, attempt to damage, or participate in the damage of property belonging to or in the care of the University, a member of the University community, or a campus visitor.**
- 2. Damage which is caused accidentally should be promptly reported to a residence hall staff member or an appropriate University official. Failure to report accidental damage will be considered a violation of this regulation.**

#### **F. Disorderly Conduct**

No student shall participate, cause, or excite any disturbance, excessive noise, or contention in or near any building or other property owned or operated by the University.

#### **G. Falsification of Official Information**

- 1. No student shall alter or have in his or her possession an altered University identification card, nor alter or enter false information on an official University document.**
- 2. No student shall provide false information or fail to provide current information to the University for the purpose of defrauding the University.**

## **H. Hazing**

**No form of hazing is permitted by any student or student organization. Hazing is defined as verbal, mental, or physical abuse against an individual, with or without consent.**

### **I. Interference with the Judicial Process**

**No student shall engage in any activity which disrupts, unfairly influences, or obstructs the judicial process of Jacksonville State University. This includes, but is not limited to, the following activities:**

- 1. Attempting to influence, intimidate, or threaten any witness, judicial member, or other participant involved in the preparation of a case or the procedures constituting a judicial proceeding.**
- 2. Inappropriate or illegal distribution, announcement, or publication of confidential judicial information, letters, or decision(s).**
- 3. Giving false information to a judicial body.**

### **J. Non-Compliance with an Official Request**

- 1. No student shall fail to comply with reasonable and lawful requests or directions by members of the faculty, administrative staff, residence hall staff, police officers, or other employees acting in the performance of their official duties. Students must carry a Jacksonville State University ID card at all times and a request for proper identification from a student is a reasonable expectation.**
- 2. No student shall fail to answer or respond promptly to lawful requests from members of the faculty, administrative staff, residence hall staff, police officers, or other employees acting in the performance of their official University duties.**
- 3. No student shall intentionally provide false information verbally or in writing, to faculty, administrative staff, residence hall staff, police officers, or other employees acting in the performance of their official duties.**

### **K. Obscene Conduct**

**No student shall engage in lewd, indecent, or obscene conduct or expression on University property or in University owned or operated buildings.**

### **L. Personal Abuse**

**No student shall threaten, offend, or degrade anyone on University owned or operated property. Forms of sexual harassment are a violation of this policy.**

## **M. Projectiles**

**No student shall throw or cause to be projected any object or substance which has potential for damaging or defacing University or private property or causing personal injury or disruption.**

## **N. Right of Expression**

**Jacksonville State University seeks to preserve the student's privilege to take an active role in exercising their rights of expression, conscience, affiliation, and peaceful assembly. At the same time, the University also recognizes its responsibility to protect the rights and freedom of those who wish to pursue their educational interest without interference. The following procedures have therefore been established to safeguard the orderly functioning of all rights while also providing for the safety and protection of members of the University community.**

**1. All demonstrations or peaceful assemblies must be registered with the Director of Student Life or appointee at least 48 hours in advance. Standard space reservation procedures must be followed for the use of any University space. Demonstrations or peaceful assemblies are generally defined as any public manifestation of welcome, approval, disapproval, protest, or conscience by a student or groups of students. (Assemblies commonly associated with social or athletic events are not usually within the purview of this definition.)**

**2. At the time of the registration, the student or groups of students will be advised by the Director of Student Life or designee of any guidelines that will be required for the demonstration or peaceful assembly. Guide-lines may include the time, place, and duration of the demonstration or assembly and the maximum number of people who may participate. The decisions of the Director of Student Life regarding any demonstration or assembly guidelines may be appealed within 24 hours to the Associate Vice President for Student Affairs.**

**3. The following restrictions apply to all demonstrations or peaceful assemblies:**

- a. Blocking or impeding vehicular or pedestrian traffic is prohibited.**
- b. Blocking access to or from campus buildings or offices is prohibited.**
- c. No activity that promotes violence against person or property is permitted.**
- d. Observers may not interfere with participants of the demonstration or assembly in any way.**
- e. Activities of participants or observers that disrupt or disturb classes, meetings, or any other normal functions of the University are prohibited.**

**4. All individuals participating in or observing a demonstration or peaceful assembly must comply with any request of University officials or campus police. Any student who violates any part(s) of this policy will be subject to judicial action. Depending on the individual circumstances, criminal charges may also be**

filed. A recognized organization that violates any part(s) of this policy may have penalties imposed upon it by the Director of Student Life.

**O. Sexual Misconduct**

No student shall make sexually oriented touches, advancements, or physical contact without the full consent of the other party, or shall a student engage in lewd or lascivious behavior on University property or in University owned or operated buildings.

**P. Stalking**

Stalking is defined as repeatedly contacting, following or remaining in the physical presence of another person when that contact is unwanted. This contact includes but is not limited to: telephoning, transmitting letters or notes, or contacting through electronic media. These acts may be either passive or active. Any behavior that hampers the ability of a student to learn and/or instructor to teach shall be deemed to be disruptive. In an extreme form, this behavior may even threaten physical safety.

**Q. Theft**

1. No student shall steal, attempt to steal, or assist in the theft of any money, property, or item of value not belonging to him or her.
2. No student will illegally use or appropriate any property not belonging to him or her.

**R. Trespass**

1. Any individual refusing to leave an area as directed by an authorized administrator, faculty, or staff member is guilty of trespass.
2. Any unauthorized individual entering a University operated building or room that has been closed, locked, and/or posted shall be guilty of trespass.

**S. Unauthorized Entry**

No student shall enter or remain in an automobile, private room, office, or restricted area under control of another student, guest of a student, faculty member, or University official except by permission or invitation of the resident student, guest, or the appropriate University official or faculty member.

**T. Violence to Persons**

No student shall engage in any form of violence directed toward another person or group of people. Responding to violence with violence is a violation of this policy.

## **U. Weapons**

**No student shall keep, use, possess, display, or carry any rifle, shotgun, handgun, knife, or other lethal or dangerous weapons or devices capable of casting a projectile by air, gas, explosion, or mechanical means on any property or in any building owned or operated by the University or in any vehicle on campus. Realistic facsimiles of weapons are also specifically not allowed.**

**JACKSONVILLE STATE UNIVERSITY  
UNIVERSITY POLICE DEPARTMENT  
ANNUAL REPORT  
2008**

You may request a printed copy of this report by calling (256) 782-5287 or e-mail [kwbates@jsu.edu](mailto:kwbates@jsu.edu). Comments or questions may be addressed to the Director of Public Safety at (256) 782-5050.